

Harbor Boulevard Enhancement Project

US 41 to Olean Boulevard

Preliminary Design Features

Client: Charlotte County

Consultants: Johnson Engineering

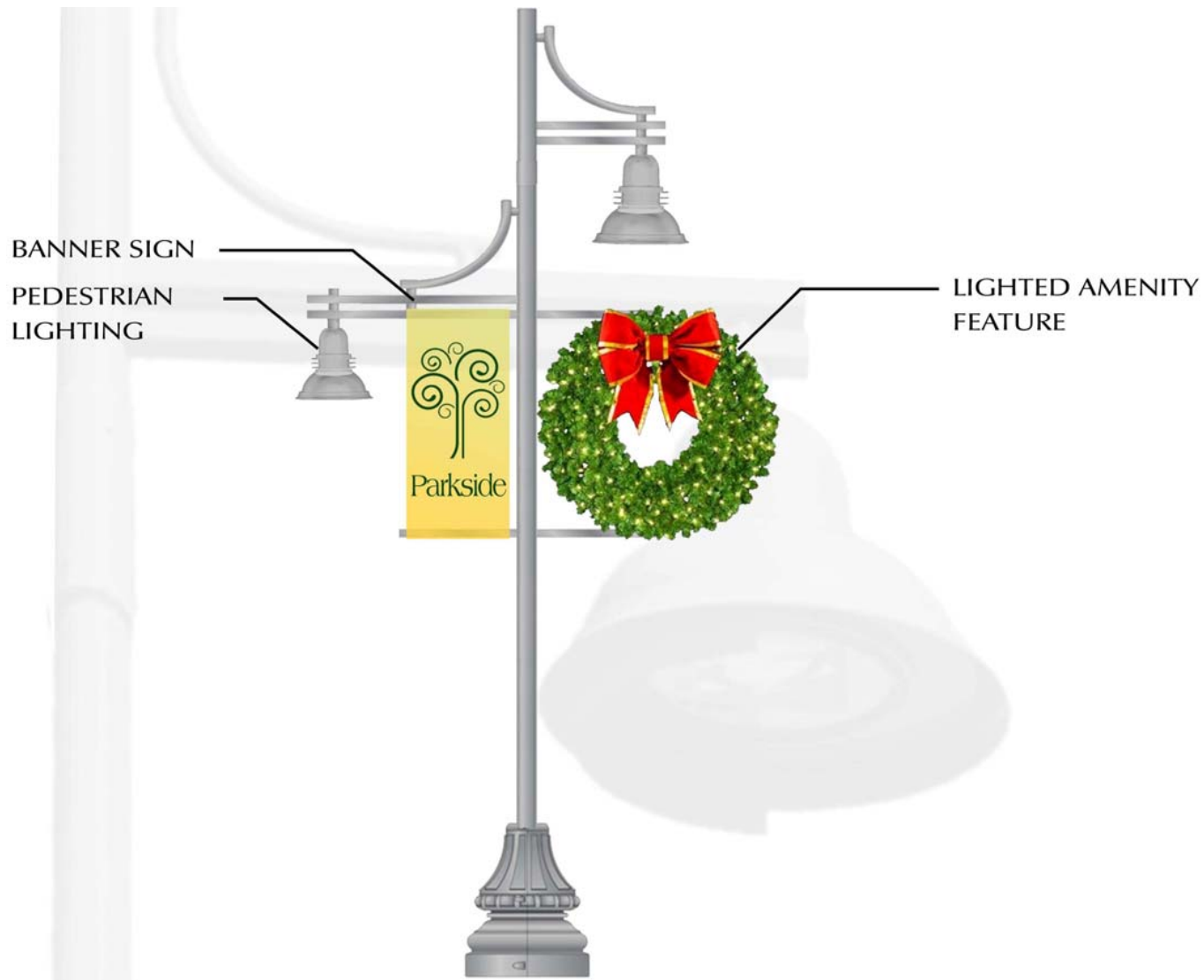
Kimley-Horn & Associates

Banks Engineering

Southwest Engineering & Design



Lighting Selection



Harbor Boulevard Enhancement Project
April 15, 2014 Board of County Commissioners Workshop



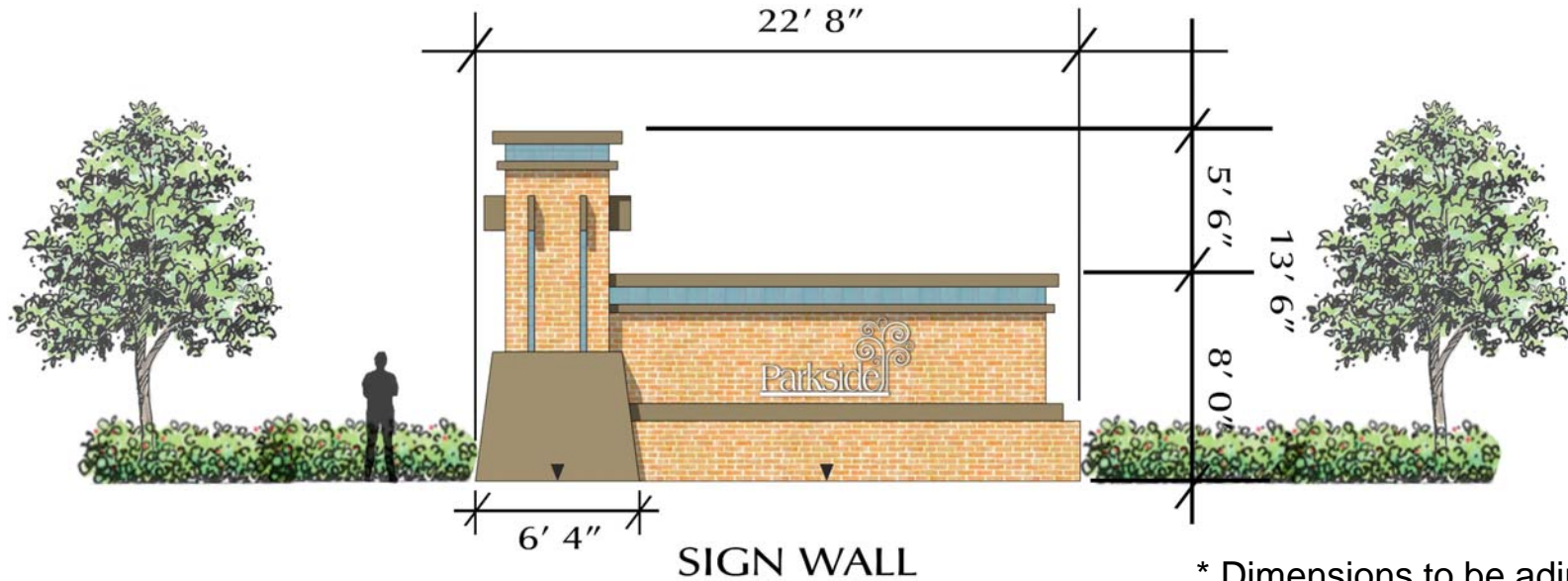
Gateway Selection



Harbor Boulevard Enhancement Project
April 15, 2014 Board of County Commissioners Workshop

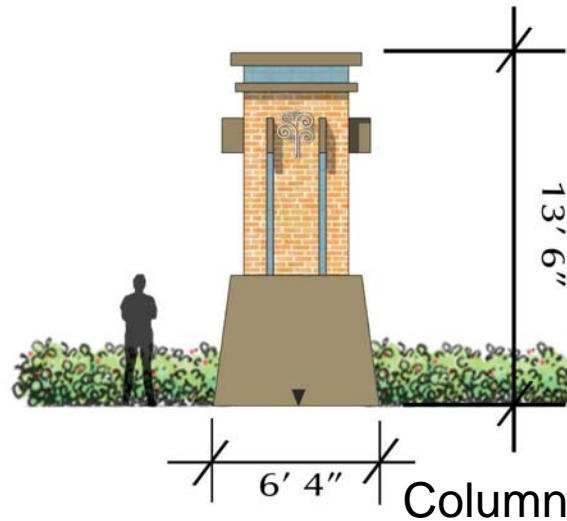


Gateway Feature



* Dimensions to be adjusted during final design.

*Materials TBD
(brick, field stone,
stucco)



Landscape, Wayfinding & Amenities

Pedestrian Nodes

- Benches
- Trash Receptacles
- Bike Racks
- Oasis

Landscape

- Canopy Trees
- Decorative Trees (Right Tree-Right Place)
- Median landscaping
- Florida Friendly

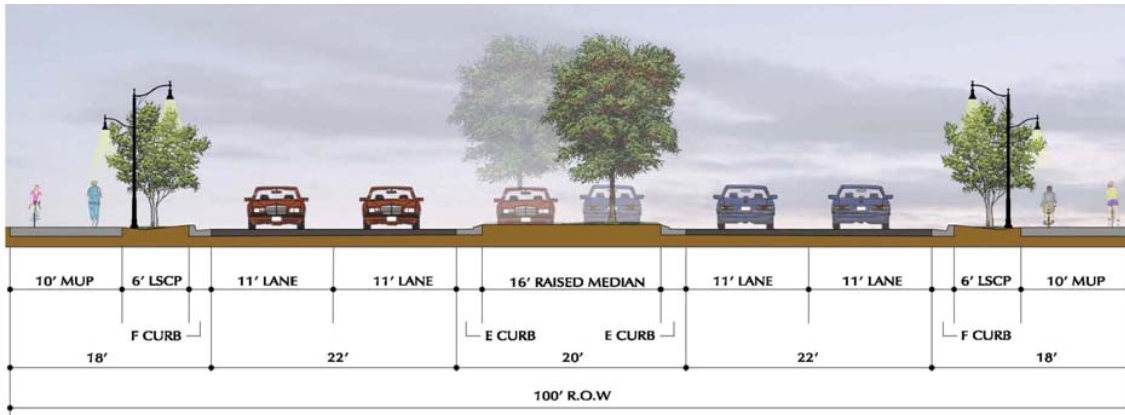
Wayfinding

- Signs & Banners
- Logo features
- Inlaid Logo

Hardscape Opportunity

- Pavers
- Concrete stamped
- Porous

Landscaping, Wayfinding & Amenities



DECORATIVE CONCRETE



CONCRETE UNIT PAVERS



Harbor Boulevard Enhancement Project
 April 15, 2014 Board of County Commissioners Workshop



Landscape, Wayfinding & Amenities



SIGN
ENHANCEMENTS



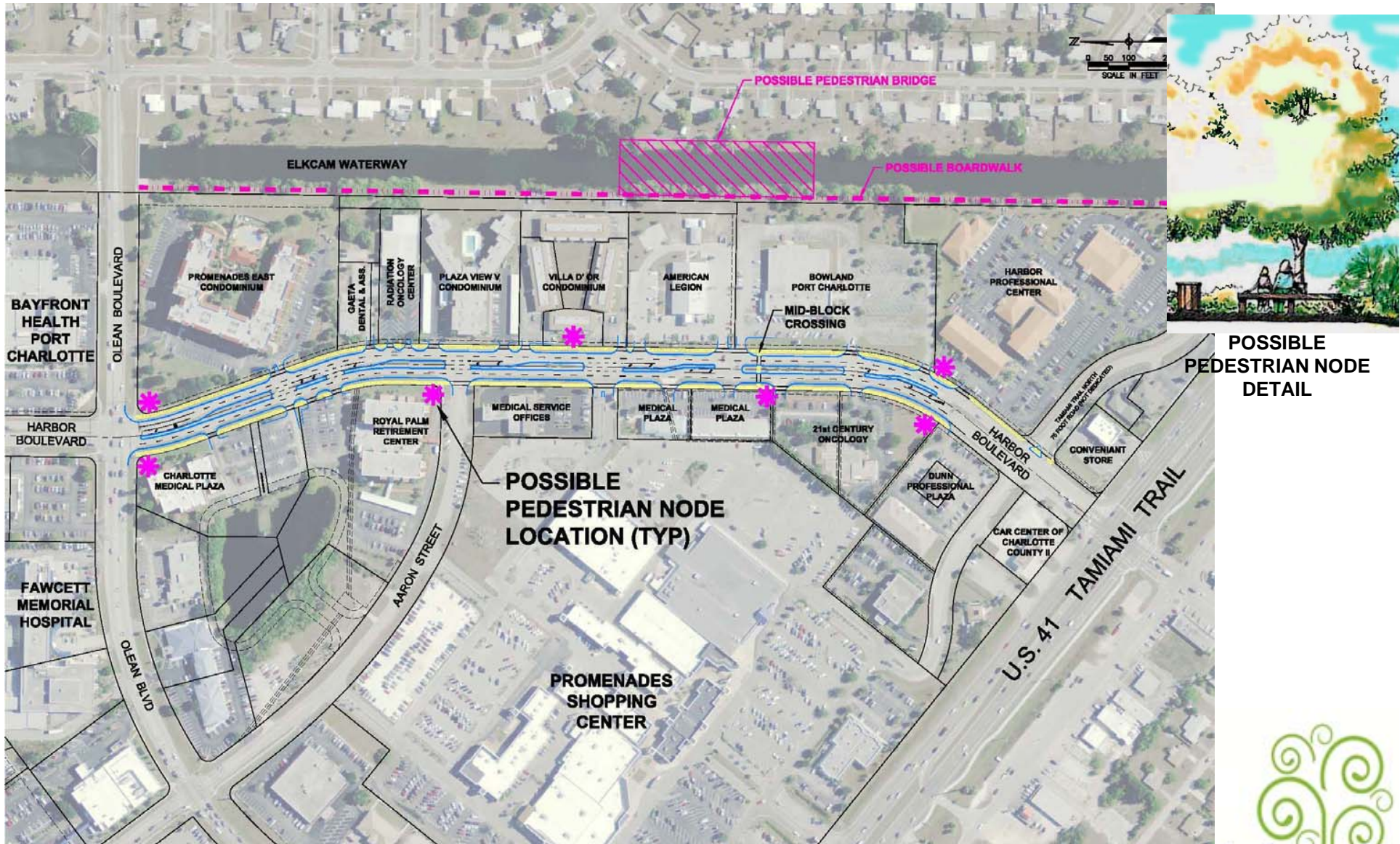
ENHANCED WAYFINDING
WITH CUSTOM SHAPES



Harbor Boulevard Enhancement Project
April 15, 2014 Board of County Commissioners Workshop



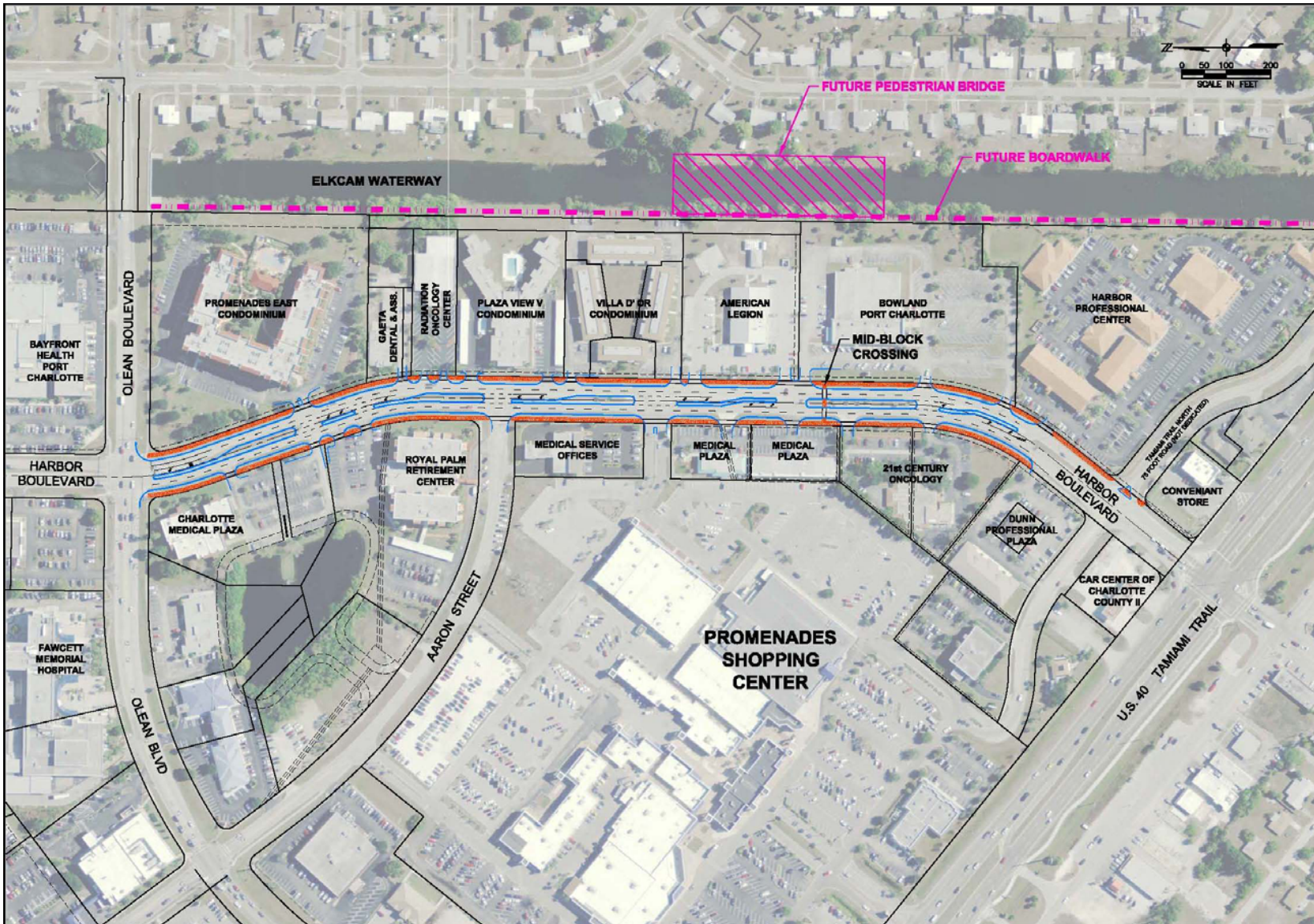
Landscape, Wayfinding & Amenities



Harbor Boulevard Enhancement Project
April 15, 2014 Board of County Commissioners Workshop



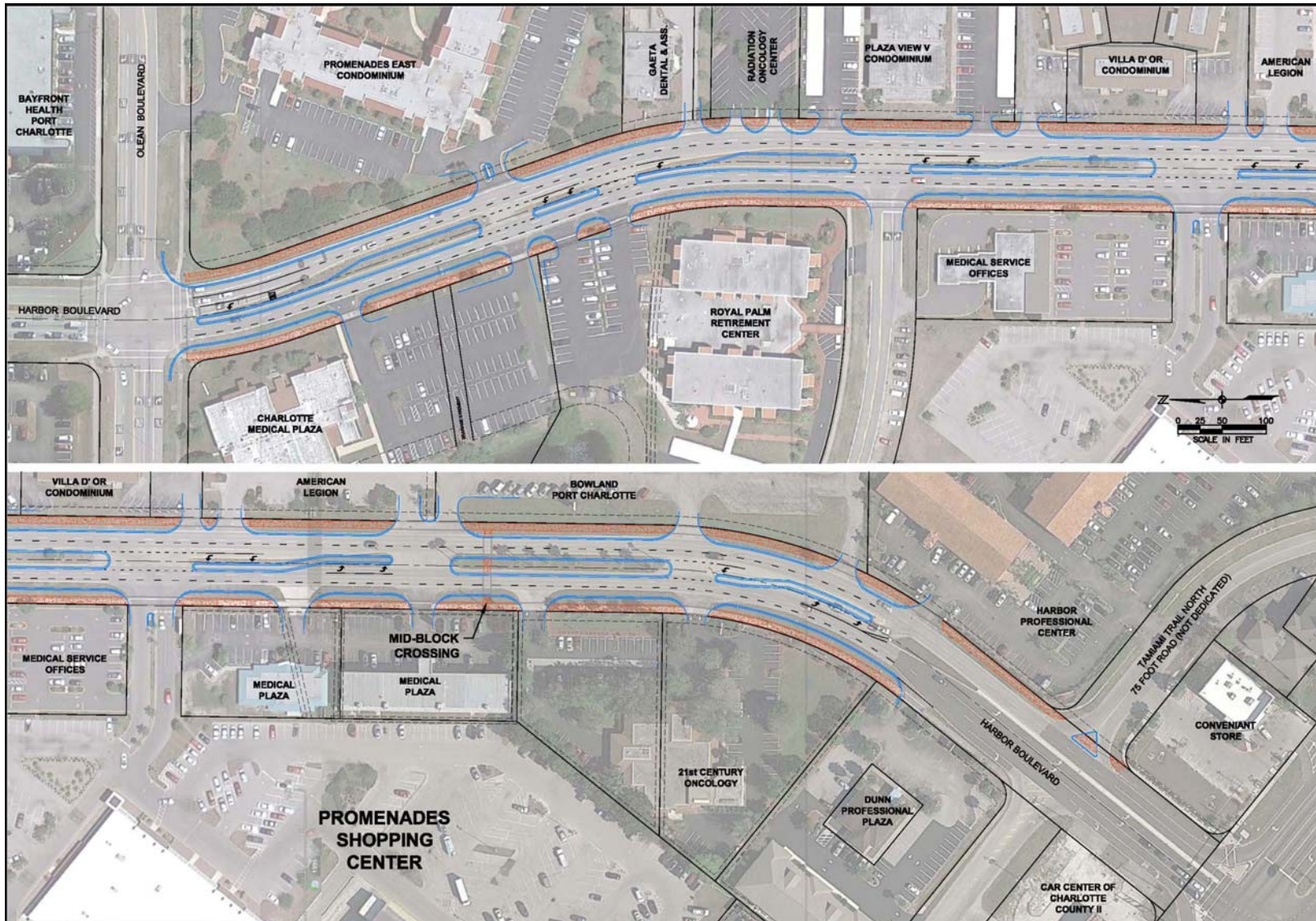
Preliminary Access Management



Harbor Boulevard Enhancement Project
April 15, 2014 Board of County Commissioners Workshop



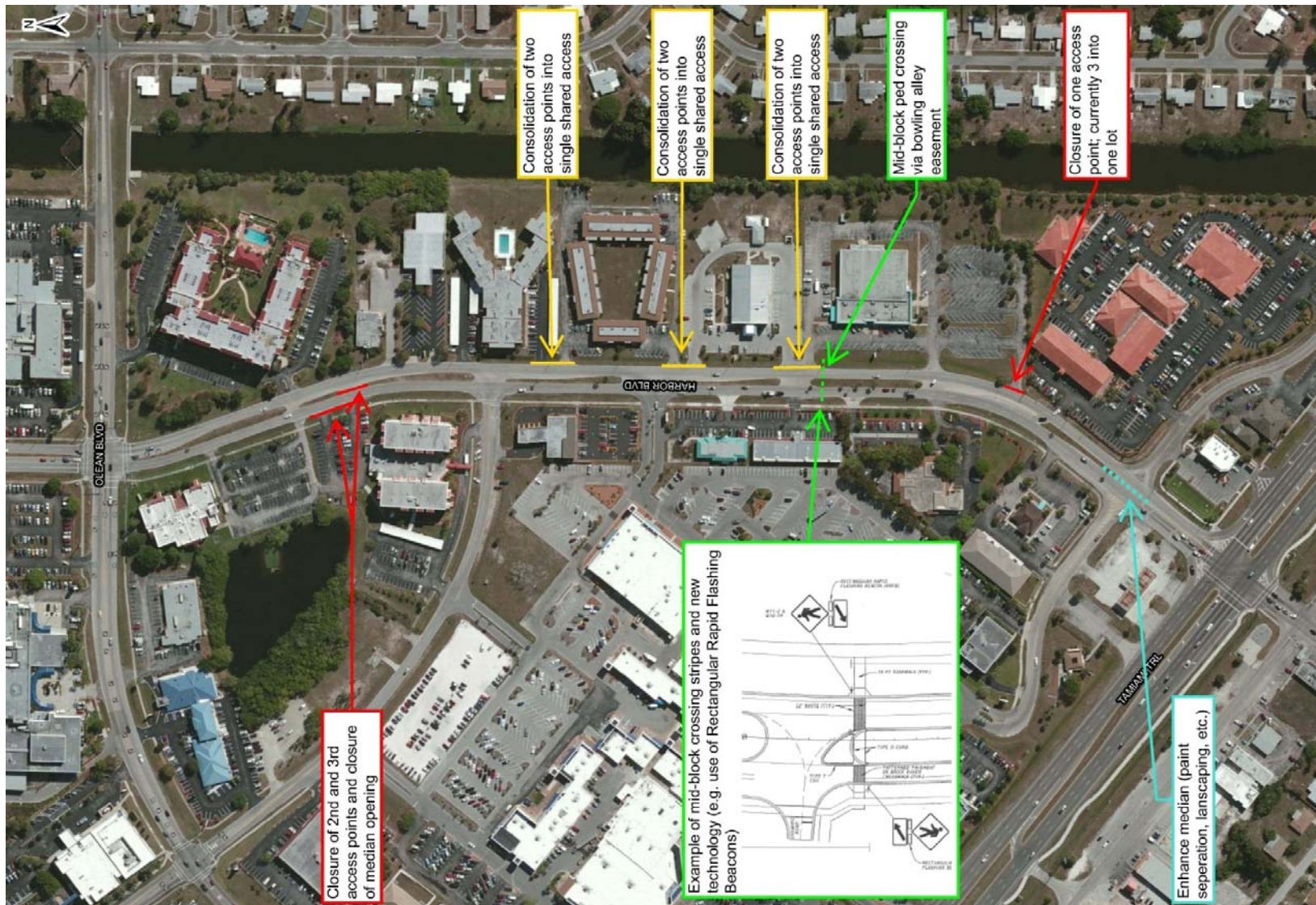
Preliminary Access Management



Harbor Boulevard Enhancement Project
April 15, 2014 Board of County Commissioners Workshop



Preliminary Access Management

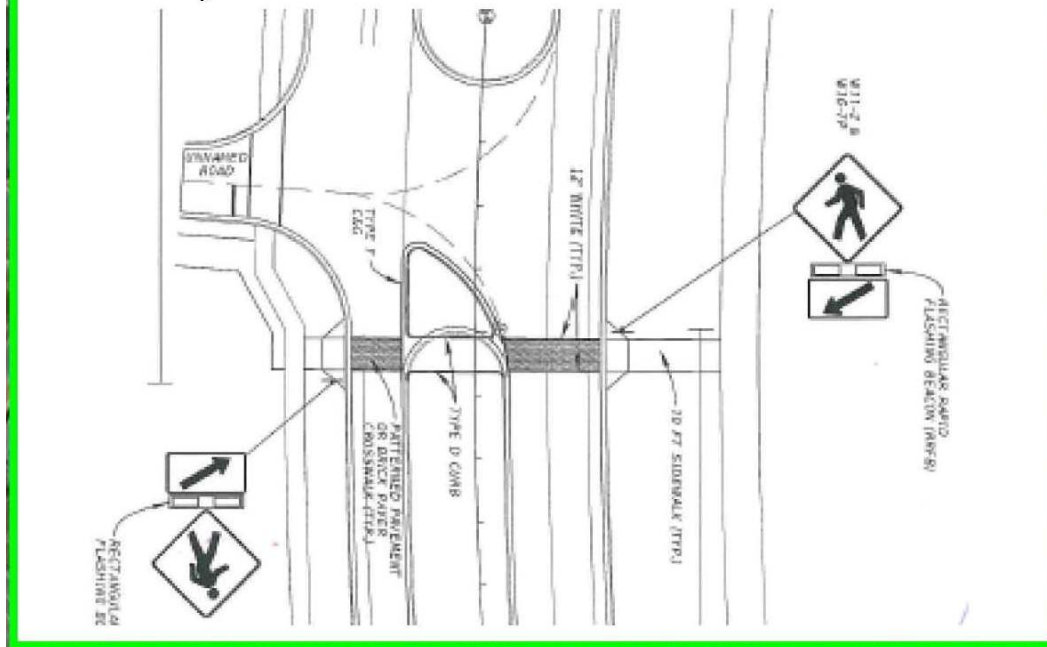


Harbor Boulevard Enhancement Project
April 15, 2014 Board of County Commissioners Workshop



Preliminary Access Management

Example of mid-block crossing stripes and new technology (e.g. use of Rectangular Rapid Flashing Beacons)



Day Video: [Day Video](#)

Night Video: [Night Video](#)

Harbor Boulevard Enhancement Project
April 15, 2014 Board of County Commissioners Workshop

