

Charlotte County Sheriff District 1 (West County) Headquarters

Public Safety

Dept. & Contact: **Facilities Construction & Maintenance — David Milligan, Facilities Construction & Maintenance Director, David.Milligan@CharlotteFL.com**

Area: **West** Location: **11501 Wilmington Blvd. Englewood, FL**

Need:

The Charlotte County Sheriff's Office (CCSO) District 1 office currently operates out of only 2,600 square feet at the West County Annex to cover 134 square miles. The current space is inadequate to house sheriff's staff and accommodate parking. The offices are neither inviting nor adequate to address walk-in public clients. All essential services conducted at a district headquarters require improved conditions. These services include: district commander presence, day-to-day district business, walk-in fingerprinting and background checks, processing to public complaints, records retention, patrol units' and investigators' home base, suspect interview rooms, property/evidence rooms, staff roll call, conference and training rooms, fitness room and locker area. There is no expansion capacity for future growth at the current location. A new 12,000 square foot district office on county property at Sunnybrook and Wilmington Boulevard is planned to accommodate foreseeable future growth and serve as a model headquarters for other district offices as needed in the future.

Purpose:

Provide the right-sized facility for the district and centrally locate in the zone for all the citizens. Provide multiple main arterial access points for even response times.

Objectives:

The district relocation will provide adequate parking to remaining Annex occupants. Improve customer satisfaction with improved response times and better access.

PROJECT COST PRIOR FUNDING:	\$300,000
PROJECT COST PRIOR FROM SALES TAX:	NONE
TOTAL PROJECT COST:	\$4,100,000
PROJECT COST REQUIRED NEW SALES TAX:	\$3,800,000
ANNUAL OPERATING COST:	\$25,437

Will the project impact public health and safety?

Safety is improved by centrally locating the district office.

Will the project foster economic development and create long-term jobs?

Provides a positive reason to build new homes in the central and eastern section of the district zone.

Will the project result in decreased, increased, or no operation and maintenance (O&M) costs?

O&M cost will increase based upon square foot increase from original building.

Will sales tax allow for application of grant funds from another entity?

No.

Will the project enable furtherance of phased projects from 2008 sales tax extension?

No.

Is this a joint project with another entity?

This project is joint venture with the Sheriff's department.

Project to be funded by the 1% Local Option Sales Tax Extension if passed by the voters of Charlotte County

Will the project meet a community obligation to serve a special needs segment of the County's population, such as:
low-income, aged, or minorities?

The centrally located facility will provide customer-friendly easy access to services. The new facility can provide video visitation area allowing citizens and minimizing travel to the current facility at the jail.

Is the project included Master Plan and/or Comprehensive Plan?

No.

Will the project impact environmental quality of the County?

Reduces the carbon footprint from the vehicular travel of citizens and officer response to the eastern zone. The new energy efficient facility and green building technology will provide a smaller carbon footprint to the environment.

Percentage of population served

The district located in the highly populated area west of the Myakka River area.

Will the project improve quality of life in Charlotte County?

Greater officer presence helps with the security throughout the district.

Is the project state or federally mandated?

No.



Land Information
Section

CHARLOTTE COUNTY

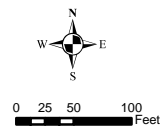
Sales Tax Projects - Charlotte County Sheriff District 1 (West County) Headquarters



Stateplane Projection
Datum: NAD83
Units: Feet

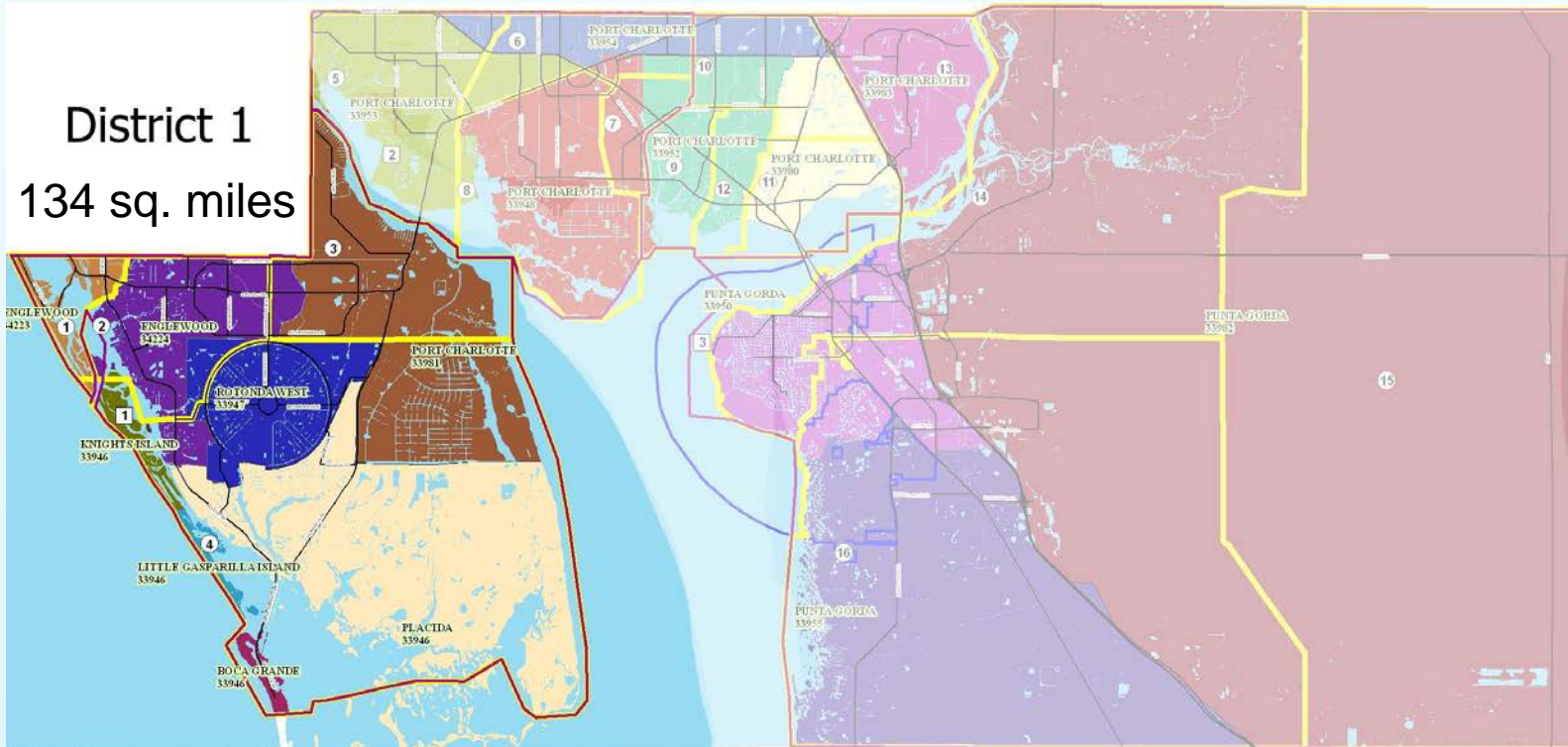
Source: Community Development,
SWFWMD

Metadata available upon request





Charlotte County Sheriff District 1 (West County) Headquarters





Charlotte County Sheriff District 1 (West County) Headquarters

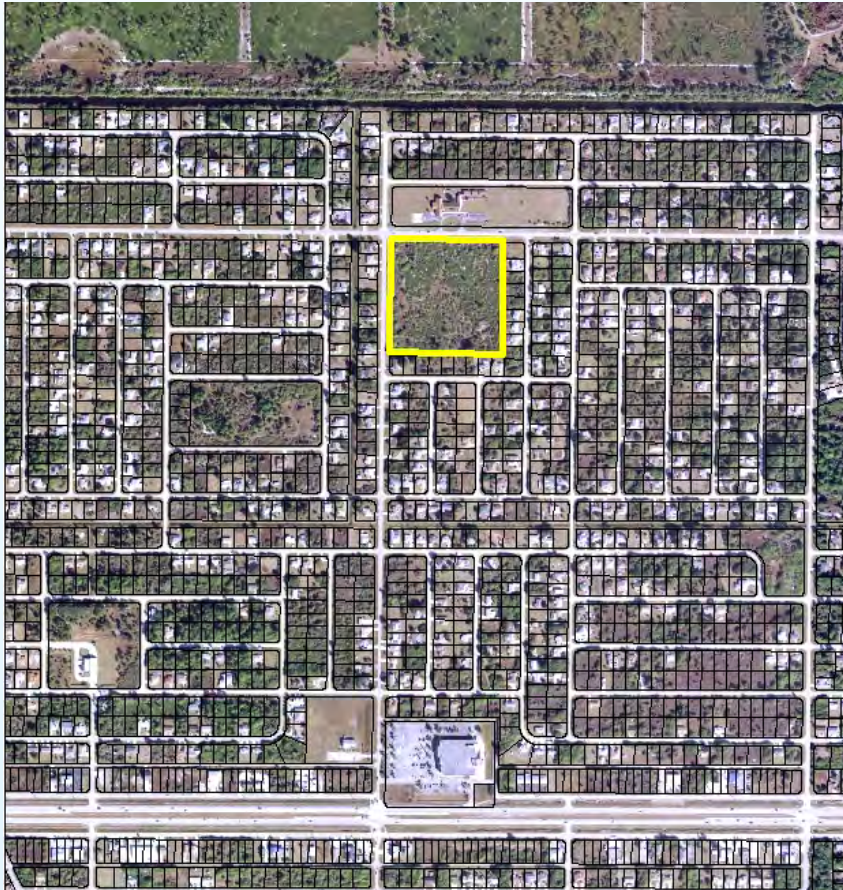
Current
Location
(West County
Annex)



Proposed
Location



Charlotte County Sheriff District 1 (West County) Headquarters



- Multiple access to collector roads and major arterials
- County-owned property
- Preliminary design completed years ago
- 12 acre site potential for shared use