

Department of Health

COVID-19 Update



December 13, 2021

Charlotte Update

23,693 total cases

- July 2021-1,368 July 2020- 1,195
- August 2021- 4,660 August 2020- 732
- September 2021- 2,884 September 2020- 378
- October 2021- 764 October 2020- 662
- November 2021- 339 November 2020- 1,387
- December 2021-204 December 2020-2,411

New weekly case Positivity 3.3%, State Average 2.6%

- Overall positivity for outbreak 19.5%; State 20.3%
- Approx. 2426 tests performed last 7 days. 4.41%+

131,513 Vaccinated Roughly 72% of 5+ eligible population.

93% over 65 vaccinated. 41,064 additional doses.

Monoclonal site data not available as we transition to local model.

Case Trends

Cases & Deaths in Charlotte County, Florida

Data through Sat Dec 11 2021

Total Cases (last 7 days)	118
Case Rate (last 7 days)	62.46
% Change (last 7 days)	40.48

Total Deaths (last 7 days)	<10
Death Rate (last 7 days)	0.00
% Change (last 7 days)	

Tue, Jan 21st 2020 - Sat, Dec 11th 2021

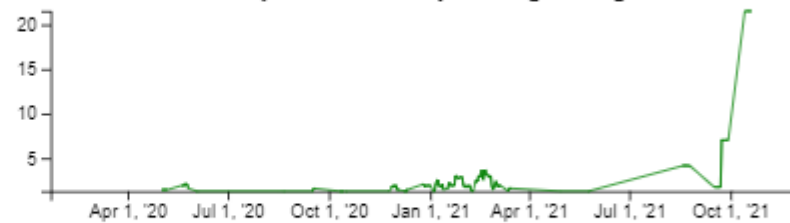
Use slider to update time series chart



Daily Cases - 7-Day Moving Average



Daily Deaths - 7-Day Moving Average



Testing

Testing in Charlotte County, Florida

Data through Thu Dec 09 2021

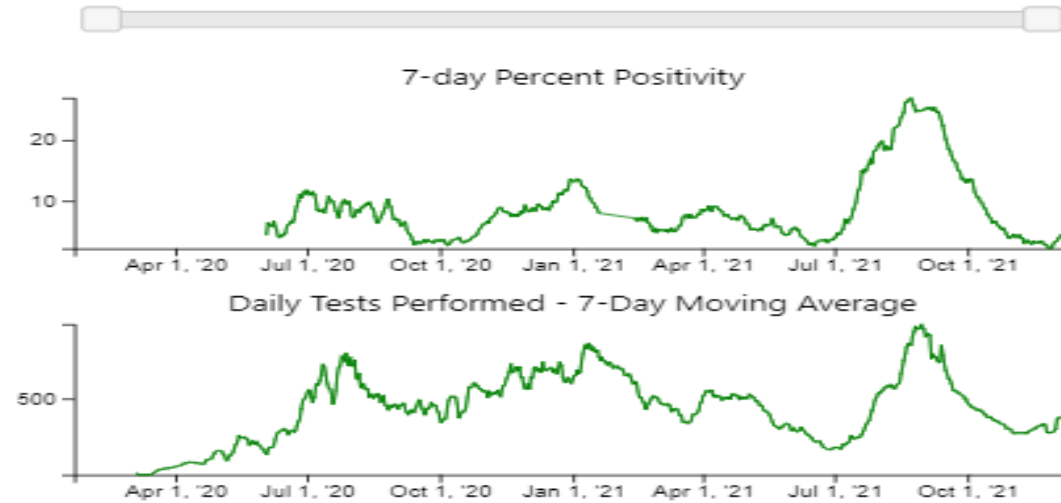
% Positivity (last 7 days) 4.41
% Change (last 7 days) 0.97

Data through Sun Dec 05 2021

Tests Performed (last 7 days) 2426
Test Rate (last 7 days) 1245.95
% Change (last 7 days) 35.99

Tue, Jan 21st 2020 - Sat, Dec 11th 2021

Use slider to update time series chart



Hospitalizations

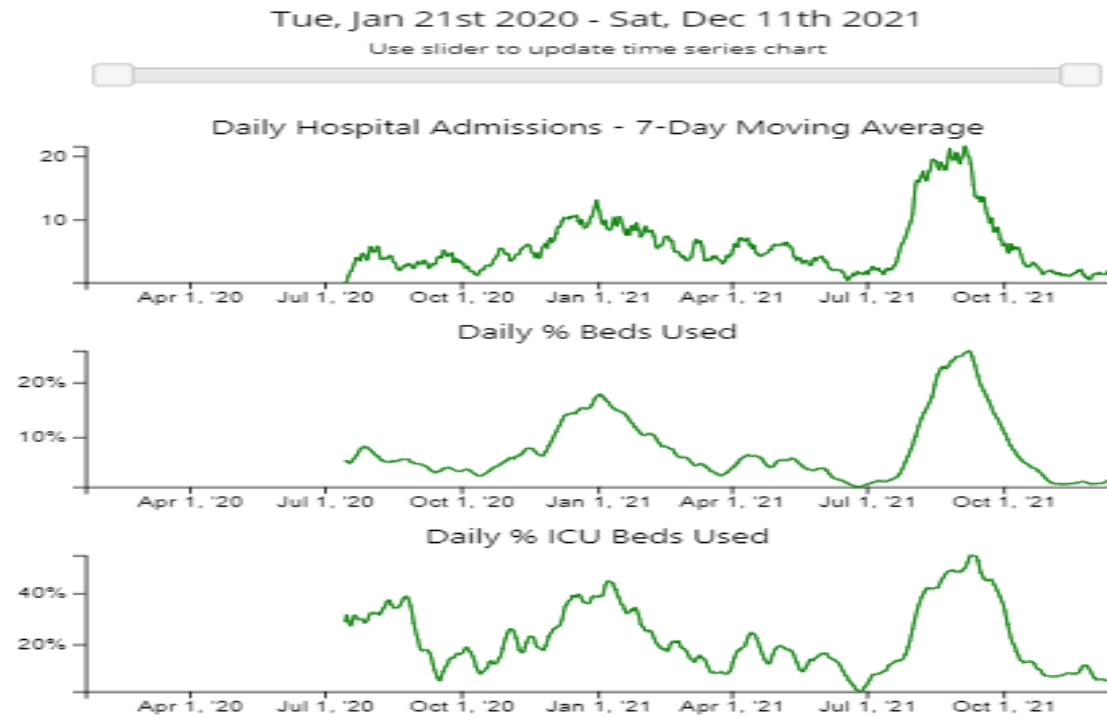
Hospitalizations in Charlotte County, Florida

Data through Fri Dec 10 2021

New Admissions (last 7 days) 11
Rate of New Admissions per 100 beds (last 7 days) 1.66
Rate of New Admissions per 100k people (last 7 days) 5.82
% Change (last 7 days) 22.22

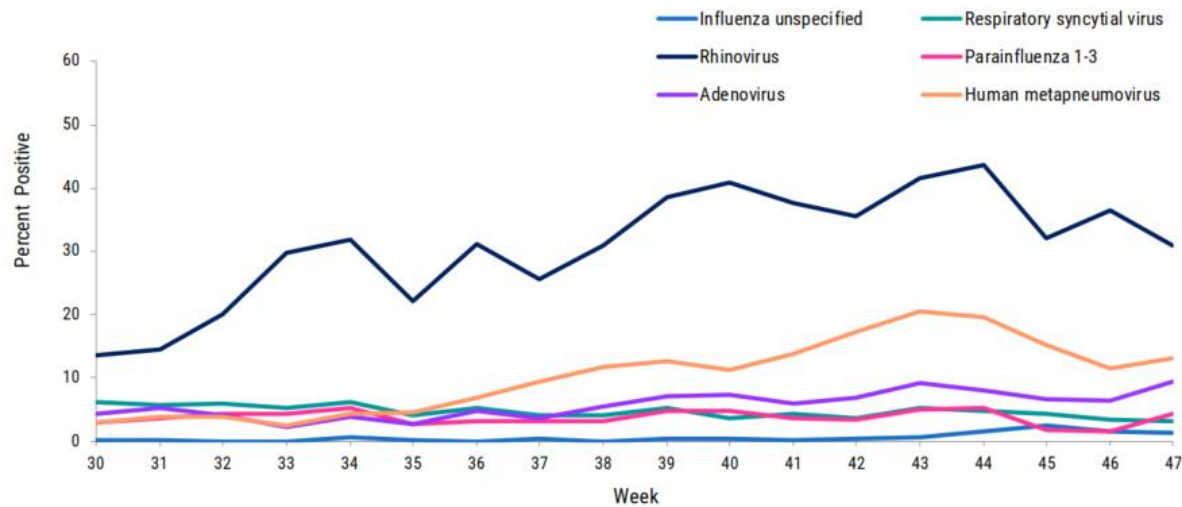
% Beds Used (last 7 days) 1.94
% Change (last 7 days) 0

% ICU Beds Used (last 7 days) 5.56
% Change (last 7 days) 0



Influenza-Like Illness Updates

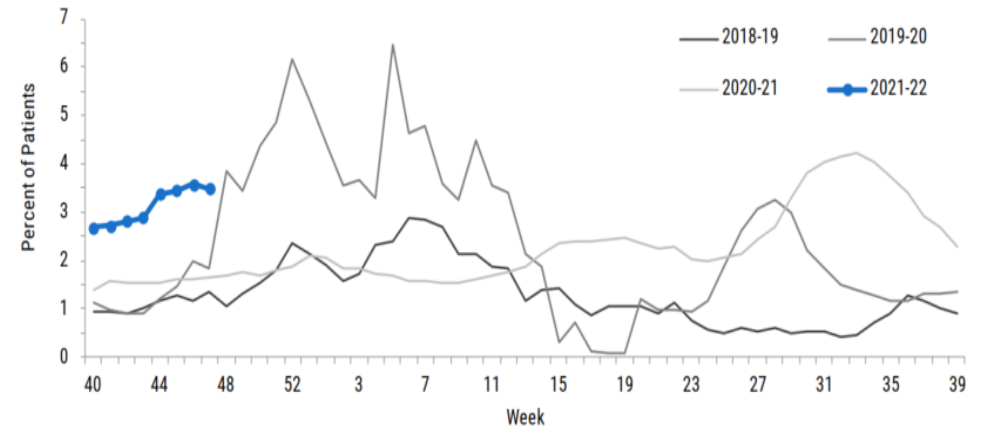
Figure 10: In week 47, the percent of specimens testing positive for **human metapneumovirus, adenovirus, and parainfluenza 1-3** increased while **RSV** and **influenza unspecified** remained consistent and **rhinovirus** decreased when compared with previous weeks. This information may change as additional data are received.



▲ Figure 10 shows the percent of laboratory results testing positive for eight common respiratory viruses, as reported by laboratories participating in the National Respiratory and Enteric Virus Surveillance System (NREVSS) and laboratories reporting validated respiratory virus data to the Florida Department of Health via electronic laboratory reporting (n=4), week 30, 2021 to week 47, 2021.

Statewide Activity: Influenza-like-illness

Figure 9: In week 47, the percent of patients with ILI reported by ILINet providers statewide remained stable and was above levels observed during previous seasons.



▲ Figure 9 shows the percent of patients with influenza-like illness (ILI) reported statewide by ILINet providers (n=353), week 40, 2018 to week 47, 2021.

For ILINet, ILI is defined as a fever $\geq 100^{\circ}\text{F}$ in conjunction with sore throat or cough. This definition was updated starting with the 2021-22 season which impacts comparisons between season.



Strategy/Updates

Vaccine Manufacturer	Pfizer-BioNTech	Moderna	Johnson & Johnson's Janssen
Who Can Get This Vaccine?	People 5 years and older	People 18 years and older	People 18 years and older
Number of Shots?	2 shots given 21 days apart	2 shots given 28 days apart	1 shot
When Are You Considered Fully Vaccinated?	2 weeks after second shot	2 weeks after second shot	2 weeks after shot
Additional Dose	Recommended for moderately to severely immunocompromised people. Given 4 weeks after second shot.	Recommended for moderately to severely immunocompromised people. Given 4 weeks after second shot.	Not recommended at this time.
Booster Dose	<p>You are eligible for a booster if you are:</p> <ul style="list-style-type: none"> 65 years or older Age 18+ who live in long term care settings Age 18+ who have underlying medical conditions Age 18+ who work or live in high risk settings <p>When to get a booster: At least 6 months after second shot.</p> <p>Heterologous Booster Dose is Allowed.</p>	<p>You are eligible for a booster* if you are:</p> <ul style="list-style-type: none"> 65 years or older Age 18+ who live in long term care settings Age 18+ who have underlying medical conditions Age 18+ who work or live in high risk settings <p>*Booster dose is a half-dose (.25mL)</p> <p>When to get a booster: At least 6 months after second shot.</p> <p>Heterologous Booster Dose is Allowed.</p>	<p>You are eligible for a booster if you are:</p> <ul style="list-style-type: none"> 18 years or older <p>When to get a booster: At least 2 months after shot.</p> <p>Heterologous Booster Dose is Allowed.</p>

- Continue current testing and vaccination strategies.
- Monoclonal site will remain open and bill insurances. (Demobilized by state on 12/11.
- Support onsite testing and vaccinations at targeted locations.
- Expansion of testing availability with partners.
- Continue rapid Infection control assessments.
- Booster shots support per CDC guidance.
- Pediatric Immunizations continue.
- Focus on recovery and holiday celebrations.
- Continued focus on ILI and respiratory illnesses.
- Continue to monitor emerging variants and respond appropriately.

<https://www.cdc.gov/coronavirus/2019-ncov/vaccines/booster-shot.html>



Discussion

Thank you.