

Ann Dever Memorial Regional Park Recreation Center

Quality of Life

Dept. & Contact: **Community Services — Tommy Scott, Director of Community Services,**
Tommy.Scott@CharlotteFL.com

Area: **West** Location: **6791 San Casa Drive, Englewood**

Need:

The need for a Regional Park Recreational Center was identified in the 1998 and 2002 sales tax. But, to date, no recreation center has been constructed at the current park site.

Purpose:

Provides fitness and recreation opportunities in west county, including a multi-purpose gymnasium, fitness center, multi-purpose rooms and a community garden.

Objectives:

Build 23,000 sq ft Recreation Center - multi-purpose gymnasium, fitness center, multi-purpose rooms and community garden.

PROJECT COST PRIOR FUNDING:	NONE
PROJECT COST PRIOR FROM SALES TAX:	NONE
TOTAL PROJECT COST:	\$9,036,000
PROJECT COST REQUIRED NEW SALES TAX:	\$9,036,000
ANNUAL OPERATING COST:	\$278,307

Will the project impact public health and safety?

The project will promote healthy lifestyles and activity by providing a fitness center, as well as a recreational gymnasium, community garden, and multi-purpose facilities to support active/healthy lifestyles.

Will the project foster economic development and create long-term jobs?

Companies seeking to grow as well as relocate to Charlotte County, put a great value on the recreation opportunities that are available to their employees while not at work.

Will the project result in decreased, increased, or no operation and maintenance (O&M) costs?

There would be a significant increase in O&M for the department, as this is a new facility..

Will sales tax allow for application of grant funds from another entity?

Matching grant funds may be applied for from the Florida Recreation Development Assistance Program, up to \$200,000.

Will the project enable furtherance of phased projects from 2008 sales tax extension?

No, however Ann Dever Memorial Regional Park is a 1998 and 2002 Sales Tax Extension project.

Is this a joint project with another entity?

None have been identified at this time. But, the increased level of service available will allow for further opportunities to partner in the future.

Will the project meet a community obligation to serve a special needs segment of the County's population, such as: low-income, aged, or minorities?

Access to the recreational facilities will serve all segments of the community.

Project to be funded by the 1% Local Option Sales Tax Extension if passed by the voters of Charlotte County

Is the project included Master Plan and/or Comprehensive Plan?

The department is currently developing its park master plan and it will be incorporated into the Comprehensive Plan. The additional amenities assist the County in established level of service for Parks and Recreation called for in the Comprehensive Plan.

Will the project impact environmental quality of the County?

There will be minimal environmental impact, if any.

Percentage of population served

Ann Dever Memorial Regional Park serves the west-county section of Charlotte County, which has a population base that will enjoy this low impact, low cost recreational opportunity. This project will serve roughly 25%-49% of the county's population.

Will the project improve quality of life in Charlotte County?

This facility will significantly improve the quality of life in Charlotte County, and provide much needed access to recreational facilities in the County.

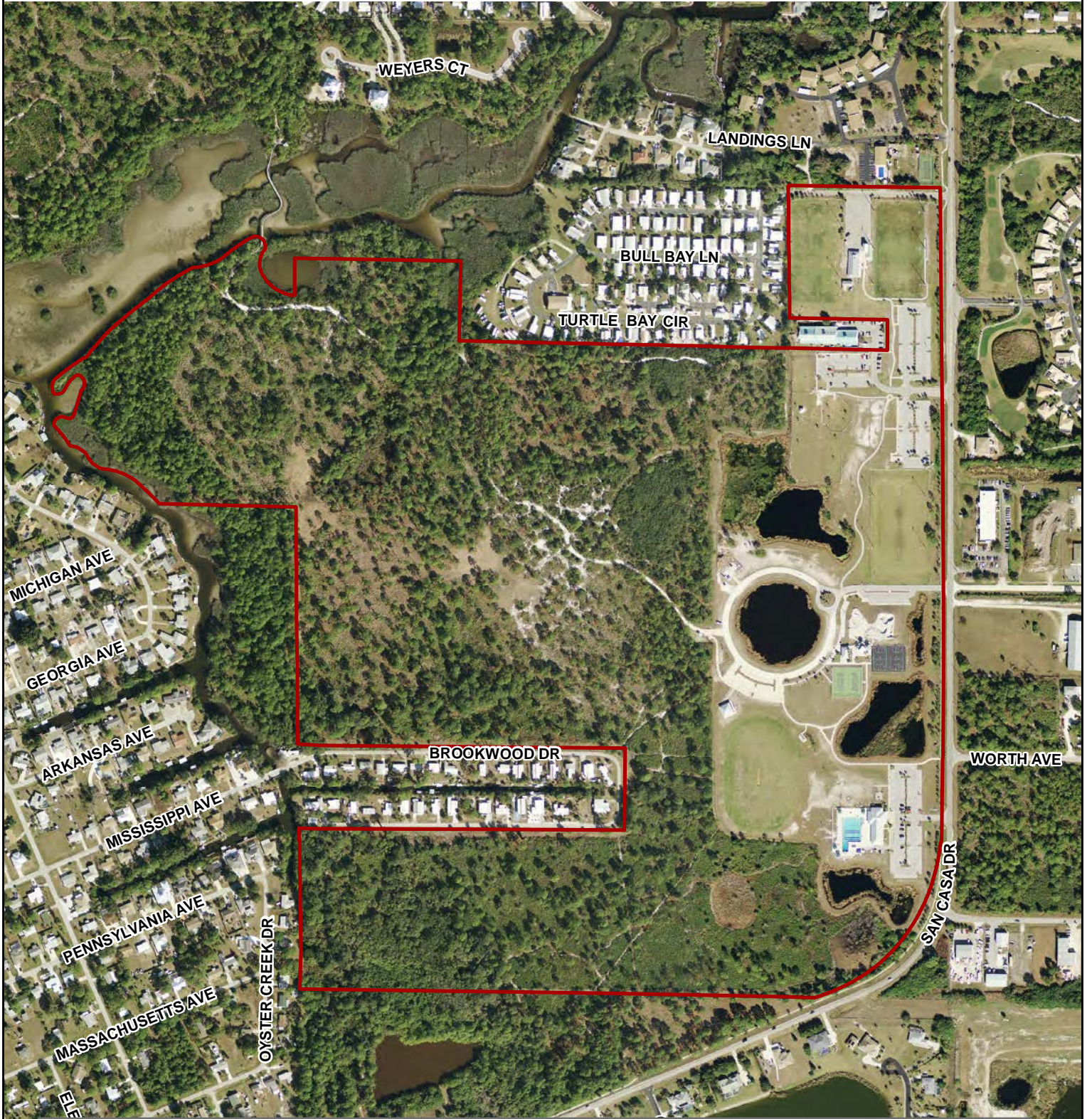
Is the project state or federally mandated?

No.



CHARLOTTE COUNTY

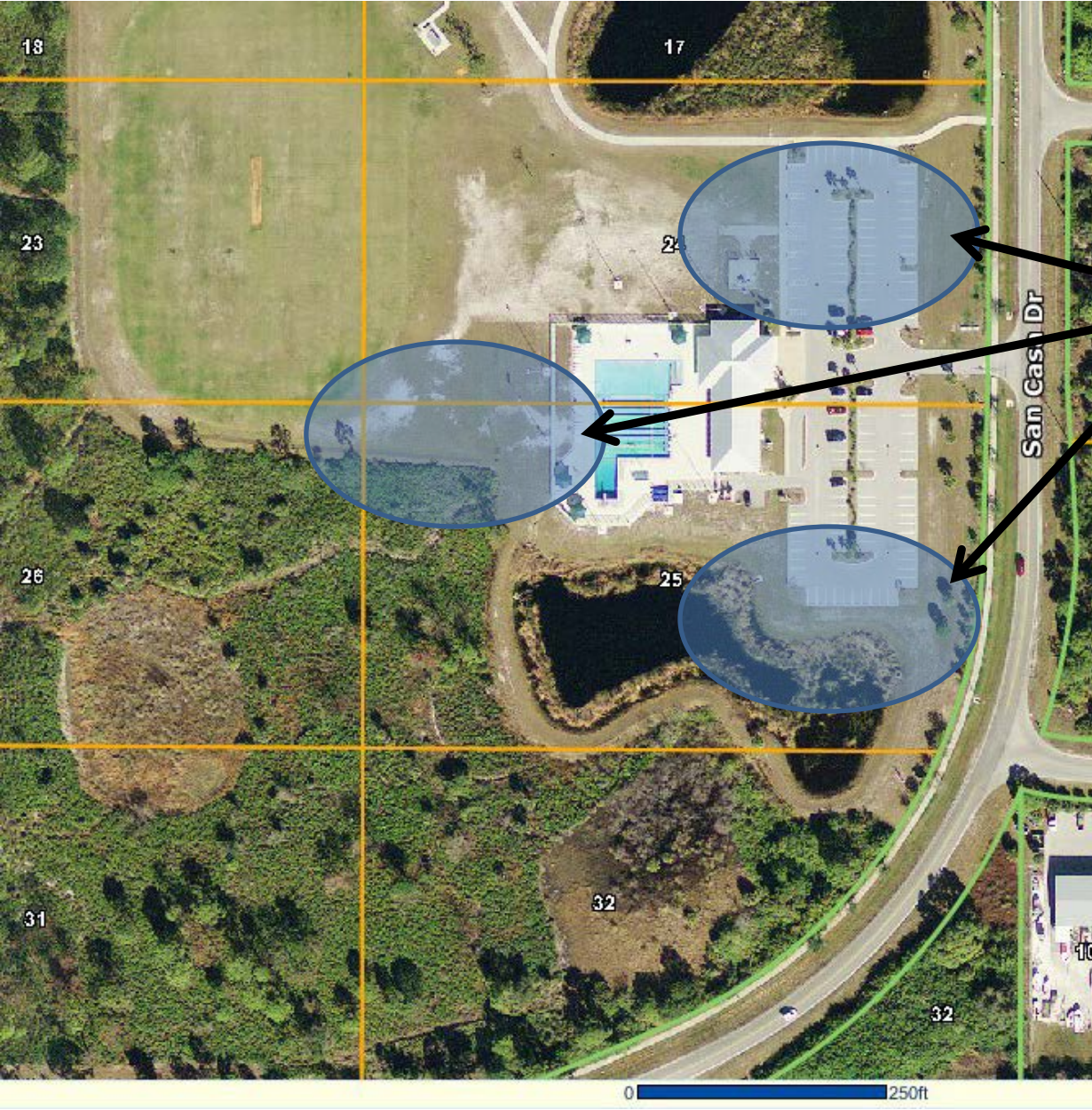
Sales Tax Projects - Ann Dever Memorial Regional Park Recreation Center



Stateplane Projection
Datum: NAD83
Units: Feet
Source: Community Development,
SWFWMD
Metadata available upon request



0 112.5 225 450
Feet



Possible sites for the Recreation Center at Ann Dever Memorial Regional Park.

Site determination will be included in the consultant/design team's tasks.