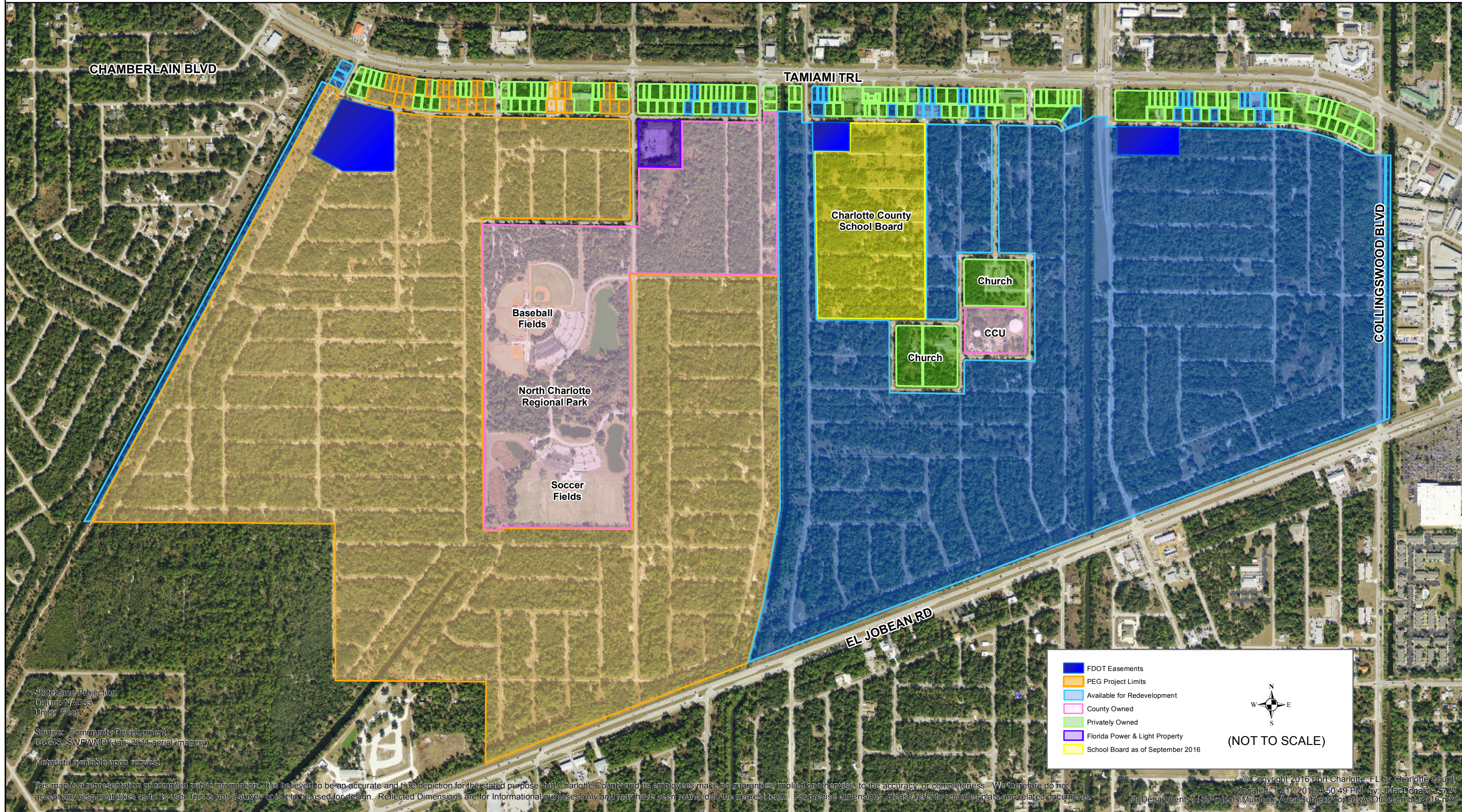




CHARLOTTE COUNTY

Murdock Village - Subject Property

December 2016



Stateplane Projection
 Datum: NAD83
 Units: Feet
 Source: Community Development
 CCGIS, SWFWMD (Jan, 2011 aerial imagery)
 Metadata available upon request

This map is a representation of compiled public information. It is believed to be an accurate and true depiction for the stated purpose, but Charlotte County and its employees make no guarantees, implied or otherwise, to the accuracy, or completeness. We therefore do not accept any responsibilities as to its use. This is not a survey or is it to be used for design. Reflected Dimensions are for Informational purposes only and may have been rounded to the nearest tenth. For precise dimensions, please refer to recorded plats and related documents.

© Copyright 2016 Port Charlotte, FL by Charlotte County
 Updated: 12/12/2016 4:50:49 PM by: JMacDonald -5721
 M:\Departments\GIS\Projects\Murdock Area Subject Property As Of December 2016.mxd