

RESTORE ACT Direct Component Multiyear Plan Matrix — Department of the Treasury	OMB Approval No. 1505-0250
---	----------------------------

1. CUMULATIVE DIRECT COMPONENT ALLOCATION AVAILABLE FOR DISTRIBUTION TO APPLICANT:	\$737,204.48	2. TOTAL ALLOCATIONS PLUS KNOWN FUNDS NOT YET DEPOSITED IN TRUST FUND FOR DIRECT COMPONENT:	\$737,204.48
--	--------------	---	--------------

According to the Paperwork Reduction Act of 1995, no persons are required to respond to a collection of information unless it displays a valid OMB control number. The valid OMB control number for this information collection is 1505-0250. Comments concerning the time required to complete this information collection, including the time to review instructions, search existing data resources, gathering and maintaining the data needed, and completing and reviewing the collection of information, should be directed to the Department of the Treasury, RESTORE Act Program, 1500 Pennsylvania Ave., NW, Washington, DC 20220.

RESTORE ACT Direct Component Multiyear Plan Narrative

OMB Approval No. 1505-0250

Eligible Applicant Name: Charlotte County Florida

Name and Contact Information of the Person to be contacted (POC) on matters concerning this Multiyear Implementation Plan:

POC Name: Mindy Collier

POC Title: RESTORE Act Coordinator

POC Email: Mindy.Collier@charlottecountyfl.gov

POC Phone: +1 (941) 764-4996

B. PROVIDE A BRIEF NARRATIVE THAT DEMONSTRATES:

1. The need, purpose, and objectives for each activity, including a detailed description of each activity.

Charlotte County's Multiyear Plan includes 4 projects; Harbor Walk, Fisheries Monitoring, Restoring Bay Scallops and Restoring the Impaired Waters of Charlotte Harbor.

Harbor Walk

The Harbor Walk is a project located in an area designated by the County as the Charlotte Harbor Community Redevelopment Agency (CRA). The Florida Legislature enables local units of government to establish CRA's in areas where "slum" and "blight" exist with the goal to encourage local initiatives to revitalize older downtowns and declining residential neighborhoods. Each CRA must develop a Community Redevelopment Plan which identify proposals for future land use, private sector development opportunities and recommended public investment in capital improvements. (See attached Charlotte Harbor CRA Redevelopment Plan). The vision of the Charlotte Harbor CRA's plan is to develop a mix of uses: residential, retail, and tourist-related that will support commerce and economic development in the area. The Harbor Walk project is located at "front door" of the Charlotte Harbor CRA and will be the first part of the area that residents and tourists will see as they cross the bridge over the Peace River from Punta Gorda, Florida to Charlotte Harbor. Currently, the site is undeveloped and does not have any public facilities.

Need: The Harbor Walk project site currently consists of vacant lots at the southern entrance into the Charlotte Harbor Community Redevelopment Agency area. With no formal site improvements and maintenance, the site would continue to decline and blight the southern entrance to the Charlotte Harbor Community Redevelopment Agency area. US 41 crosses through the project site and there are no public transportation facilities linking both sides of US 41 for pedestrians and cyclists to use.

Purpose: This project provides a transportation corridor for pedestrians and cyclists needed to support commerce and economic development at the southern entrance to the Charlotte Harbor redevelopment area.

Objectives: Construct a boardwalk that provides an alternative transportation corridor across US 41 for pedestrians and cyclists, construct a fishing pier and a boat taxi launch facility. Direct component funds will be used toward the construction of the boardwalk while other project funds will be used to construct the fishing pier and boat taxi launch at the site.

Fisheries Monitoring

The Fisheries Monitoring project assesses the impact of hydrologic restoration efforts that can effect the design of future restoration of impacted tidal tributaries and the improvement of fish stocks in the Gulf of Mexico. The project implements the following federally approved Charlotte Harbor National Estuary Program Comprehensive Conservation Management Plan (CCMP) Up-Date 2013 Priority Actions and Environmental Indicator; FW-F: Restore and protect a balance of native animal communities through strategy (3) "Continue and expand independent fisheries' monitoring programs." (See attached CCMP, page 111.)

Need: 80% of economically important fisheries in the Gulf of Mexico are dependent on estuaries during their early life stages. Rivers and tidal tributaries serve as nursery habitat for several Gulf-spawning species. Coastal wetlands and their associated tidal tributaries rank among the most productive estuarine habitats. A decrease in prey diversity and nursery use associated with coastal development has been found in Tampa Bay tidal tributaries. Hydrologic restoration projects affecting tidal tributaries are underway in Charlotte Harbor and there is a need to assess the impacts of habitat restoration work.

Purpose: The Fisheries Monitoring project provides a monitoring component to evaluate the response of the biological community to restoration projects.

Objective: Expand fisheries monitoring through up to 23 samples per month in two tidal tributary systems that will provide data on an environmental indicator (fish communities) in a strata (tidal tributaries) identified as a critical fish nursery habitat. Direct component funds will be used toward the cost of monitoring/sampling supplies, field staff time to conduct monitoring, and use/fuel for vessel(s) to access monitoring sites while other funds will be used for use of lab equipment, monitoring supervision and data analysis.

Restoring Bay Scallops

Restoring Bay Scallops: Bay scallops were once abundant in Charlotte Harbor and the Southwest Florida waters of the Gulf of Mexico,

however by the mid-1960's the bay scallop population had collapsed. Only recently, counties to the south of the Suwannee River have restored populations and reopened scallop areas for recreational harvesting. Large-scale restoration efforts initiated in the 1990's contributed to the reopening of a recreational scallop harvest in the Crystal River area of Citrus County in 2002 (located over 100 miles north of Charlotte County on the Gulf of Mexico) and in 2003 the total output impacts on the county's economy were estimated to be over \$1.6 million with a total of 35 jobs created by the additional revenues from scallopers visiting Citrus County. (Stevens et al, UF/IFAS EDIS #FE493). This project is based on best available science from successful bay scallop restoration projects and cited in the following literature: (1) Arnold, WS. 2008. Application of Larval Release for Restocking and Stock Enhancement of Coastal Marine Bivalve Populations, Reviews in Fisheries Science 16:1-3, pages 65-71, (2) Arnold, WS, NJ Blake, MM Harrison, DC Marelli, ML Parker, SC Peters and DE Sweat. 2005. Restoration of Bay Scallop (*Argopecten irradians* (Lamarck)) Populations in Florida Coastal Water: Planting Techniques and the Growth, Mortality and Reproductive Development of Planted Scallops, Journal of Shellfish Research 24:4, pages 883-904, and (3) Arnold, WS, DC Marelli, CP Bray, and MM Harrison. 1998. Recruitment of Bay Scallops *Argopecten Irradians*, Marine Ecology Progress Series 170, pages 143-157.

Need: Bay scallops were once abundant in Southwest Florida waters and supported a mainly commercial fishery. By the mid-1960's bay scallop populations in Southwest Florida had collapsed.

Purpose: The goal of the project is to increase the number of bay scallops in Charlotte Harbor through significantly increasing the scale of bay scallop restoration efforts in Charlotte Harbor.

Objectives: Increase the number of bay scallops in Charlotte Harbor through controlled releases of bay scallop larvae and juveniles during two annual spawning cycles with six month post release targeted dive surveys to quantify changes in scallop abundance. Direct component funds will be used for scallop spawns (4), cage culture and supplies, monitoring supplies, and labor. The remaining project costs are comprised of in-kind volunteer time, genetic validation of scallop parentage and project oversight.

Restoring Impaired Waters of Charlotte Harbor

The Restoring Impaired Waters of Charlotte Harbor project is large, multi-phased wastewater expansion project that is aimed at eliminating on-site treatment and disposal systems (OSTDS - aka septic tanks) in densely urbanized and coastal areas of Charlotte County and connecting homes to a centralized wastewater treatment system. Prioritization of areas for centralized wastewater expansion is based on the following criteria; proximity to impaired water bodies, OSTDS failures, population density, frequency of beach closures due to bacteria, proximity of existing central wastewater disposal infrastructure, projected road paving and other county infrastructure projects. The attached preliminary engineering report dated March 2010, prepared by Charlotte County Utilities titled "Wastewater Service Program: Area 1 Preliminary Engineering Report" provides supporting information about the condition, age, and design concerns surrounding the existing OSTDS in the priority area proposed for Direct Component funding.

Need: To reduce potential sources of pollutants entering the impaired waters of Charlotte Harbor.

Purpose: To eliminate potential sources of pollutants by eliminating OSTDS'.

Objectives: Abandonment/removal of failing and/or aged on-site treatment and disposal systems (aka septic tanks) for up to 300 residential homes. Other funding will be used to construct and connect homes to the central wastewater disposal system.

2. How the applicant made the multiyear plan available for 45 days for public review and comment, in a manner calculated to obtain broad-based participation from individuals, businesses, Indian tribes, and non-profit organizations, such as through public meetings, presentations in languages other than English, and postings on the Internet. The applicant will need to submit documentation (e.g., a copy of public notices) to demonstrate that it made its multiyear plan available to the public for at least 45 days. In addition, describe how each activity in the plan was adopted after consideration of all meaningful input from the public.

In addition to receiving public input on the multiyear implementation plan (MYIP) through the RESTORE Act Advisory Board, the MYIP was published on the Charlotte County website on 7/8/2015 and a press release was sent to the media the same date requesting public comments. A bulletin advertising the public comment period was also created and aired throughout the 45 days for Charlotte County TV. The public comment period was also highlighted in the County Administrator's weekly column in the Charlotte Sun on 7/15/2015 and again on 8/6/2015 and in the Chamber of Commerce "Business OnLine" on 8/3/2015. The public comment period closed on 8/22/2015 with 24 comments received; 23 via email and one by letter. The RESTORE Act Advisory Board met on 8/27/2015 to review comments. All comments received were positive and no modifications were made to the MYIP. The RESTORE Act Advisory board approved submittal of the MYIP to the Charlotte County Board of County Commissioners for their approval. The Charlotte County Board of County Commissioners approved the MYIP at their 1/27/2016 meeting.

3. How each activity included in the applicant's multiyear plan matrix is eligible for funding and meets all requirements under the RESTORE Act.

Harbor Walk

The Harbor Walk meets the following primary eligible activity as specified by the RESTORE Act: Infrastructure projects benefiting the economy or ecological resources include port infrastructure. Secondary benefits include restoration and protection of the natural resources, ecosystems, fisheries, marine and wildlife habitats, beaches, and coastal wetlands of the Gulf Coast Region and promotion of tourism in the Gulf Coast Region including recreational fishing. This project is also located in the Gulf Coast Region and covered under Florida's Coastal Management Program as defined by section 304 of the Coastal Zone Management Act of 1972. As described in item (1), the Harbor Walk project is located in a County designated Community Redevelopment Agency (CRA) area defined as blighted which includes deterioration of site or other improvements, unsanitary or unsafe conditions, and defective or inadequate street layout. During the 1970's, as growth prospered in other areas of Charlotte County, consumer interest strayed from this historic commercial business district and properties were simply abandoned and depreciated due to the lack of owner interest and investment. This project

is seen as the economic cornerstone for future commerce in the Charlotte Harbor Community Redevelopment Agency area. RESTORE funding will be used for the construction of the boardwalk which provides a transportation corridor for pedestrians and cyclists to use linking both sides of US 41 at the southern entrance to the CRA.

Fisheries Monitoring

Fisheries Monitoring meets the following primary eligible activity as specified by the RESTORE Act: Implementation of a federally approved marine, coastal, or comprehensive conservation management plan, including fisheries monitoring. Specifically, the fisheries monitoring implements the following federally approved Charlotte Harbor National Estuary Program Comprehensive Conservation Management Plan Up-Date 2013 Priority Actions and Environmental Indicator: FW-F: Restore and protect a balance of native animal communities through strategy (3) "Continue and expand independent fisheries' monitoring programs." (See attached CCMP, page 111.) Secondary benefits include restoration and protection of the natural resources, ecosystems, fisheries, marine and wildlife habitats, beaches, and coastal wetlands of the Gulf Coast Region and promotion of tourism in the Gulf Coast Region including recreational fishing. This project is located in adjacent water within 25 miles of the Gulf Coast of Florida and covered under Florida's Coastal Management Program as defined by section 304 of the Coastal Zone Management Act of 1972.

Restoring Bay Scallops

Restoring Bay Scallops is a project design around best available science(BAS) that meets the following primary eligible activity as specified by the RESTORE Act: Restoration and protection of the natural resources, ecosystems, fisheries, marine and wildlife habitats, beaches, and coastal wetlands of the Gulf Coast Region. A secondary benefit is the promotion of tourism in the Gulf Coast Region including recreational fishing. This project is located in adjacent water within 25 miles of the Gulf Coast of Florida and covered under Florida's Coastal Management Program as defined by section 304 of the Coastal Zone Management Act of 1972. As described above, bay scallops were once abundant in Charlotte Harbor until the bay scallop population collapsed along the Gulf Coast south of the Suwannee River. Successful restoration has since occurred in the Crystal River area north of Charlotte County using the methods proposed for this project.

Restoring Impaired Waters of Charlotte Harbor

Restoring Impaired Waters of Charlotte Harbor meets the following primary eligible activity as specified by the RESTORE Act: Implementation of a federally approved marine, coastal, or comprehensive conservation management plan, including fisheries monitoring. Specifically, this project implements the following federally approved Charlotte Harbor National Estuary Program Comprehensive Conservation Management Plan Up-Date 2013 Priority Action and Strategy: HA-L: Hydrologic Alterations Encourage the use of low-impact development (LID) and green infrastructure techniques in new and old developments through strategy (3) "Support and encourage retrofitting older developments with low-impact development (LID) technologies. Promote utilization and expansion of existing efforts such as Adopt-A-Pond and Florida Yards & Neighborhoods to reduce impervious surface, increase small-scale water storage, integrate stormwater systems, reduce dependence on septic systems and enhance existing stormwater systems." (See attached CCMP, page 100.) Secondary benefits include restoration and protection of the natural resources, ecosystems, fisheries, marine and wildlife habitats, beaches, and coastal wetlands of the Gulf Coast Region and infrastructure projects benefiting the economy or ecological resources, including port infrastructure. This project is located in the Gulf Coast Region and covered under Florida's Coastal Management Program as defined by section 304 of the Coastal Zone Management Act of 1972. As stated in Item 1, Charlotte County's prioritization of areas for centralized wastewater expansion is based on the following criteria; proximity to impaired water bodies, OSTDS (Aka Septic tanks) failures, population density, frequency of beach closures due to bacteria, proximity of existing central wastewater disposal infrastructure, projected road paving and other county infrastructure projects. The project area, Area 1, is an older development located within proximity to the Charlotte Harbor, an impaired water body.

Charlotte County will follow-up and monitor each project monthly to ensure continuous compliance with RESTORE Act requirements for Direct Component funding.

4. How the applicant will evaluate success of the activities included in the matrix.

Success of each project will be evaluated based on the completion of the following objectives:

Harbor Walk: Construction of a boardwalk which will provide a transportation corridor to link both sides of US 41 for pedestrians and cyclists.

Fisheries Monitoring: Expansion of monitoring to include two (2) tidal tributaries downstream of major restoration projects in the Charlotte Harbor Estuary.

Restoring Bay Scallops: Controlled releases of bay scallop larvae and juveniles during two (2) annual spawning cycles with six (6) month post release targeted dive surveys to quantify changes in scallop abundance.

Restoring Impaired Waters of Charlotte Harbor: Abandonment of on-site treatment and disposal systems (aka septic tanks) for up to 300 residential dwellings will divert an estimated 21,000 gallons of wastewater per day to a centralized wastewater treatment system for further treatment.

5. How the activities included in the multiyear plan matrix were prioritized and the criteria used to establish the priorities.

On November 12, 2014 the Charlotte County Board of County Commissioners (BCC) passed a resolution (No. 2014-167) to create the RESTORE Act Advisory Board to develop and establish a process for allocation of funds as outlined in the RESTORE Act requirements and review and rank projects that are consistent with the best interests of the county by utilizing criteria developed. At a minimum, one Advisory Board member was to be chosen from each of the following seven (7) categories: environmental science or advocacy; coastal resource management; marine sciences; finance, accounting/grants management; tourism; and economic development. The Charlotte County RESTORE Act Advisory Board began meeting weekly in January 2015 to establish priorities, ranking criteria and an application process for projects to be included in the multiyear plan matrix. The criteria used included the following: Does the project meet at least one of the RESTORE Act "allowable uses"?; Is the project aligned with one of Charlotte County's focus area goals?; Does the project add benefit when partnered with other county projects?; and Are there other funding sources that when added with RESTORE Act allocation make the project more achievable? A scoring matrix was developed and each Advisory Board member individually scored all of the seven (7) project applications received after a 60 day application period. Projects were then ranked according to scores and the Advisory Board voted to include the four highest ranked projects into the multiyear plan.

Harbor Walk, Fisheries Monitoring and Restoring Bay Scallops were allocated the amount of RESTORE funding requested in their proposals. While the Charlotte County RESTORE Act Advisory Board favorably ranked the Restoring Impaired Waters of Charlotte Harbor proposal (wastewater expansion), Charlotte County's Direct Component allocation was not sufficient to allocate the total amount requested. The Board requested the applicant to provide achievable milestones for an amount that could be allocated to the project and subsequently voted to fund the project at \$114,045 for the abandonment/removal of septic systems.

6. The relationship, if any, between the activities the applicant included in the multiyear plan matrix and other activities funded under the RESTORE Act.

At this time there are no coordinated activities between the projects listed in this Multiyear Plan and other activities funded under the RESTORE Act.

According to the Paperwork Reduction Act of 1995, no persons are required to respond to a collection of information unless it displays a valid OMB control number. The valid OMB control number for this information collection is 1505-0250. Comments concerning the time required to complete this information collection, including the time to review instructions, search existing data resources, gathering and maintaining the data needed, and completing and reviewing the collection of information, should be directed to the Department of the Treasury, RESTORE Act Program, 1500 Pennsylvania Ave., NW, Washington, DC 20220.



Community
Development

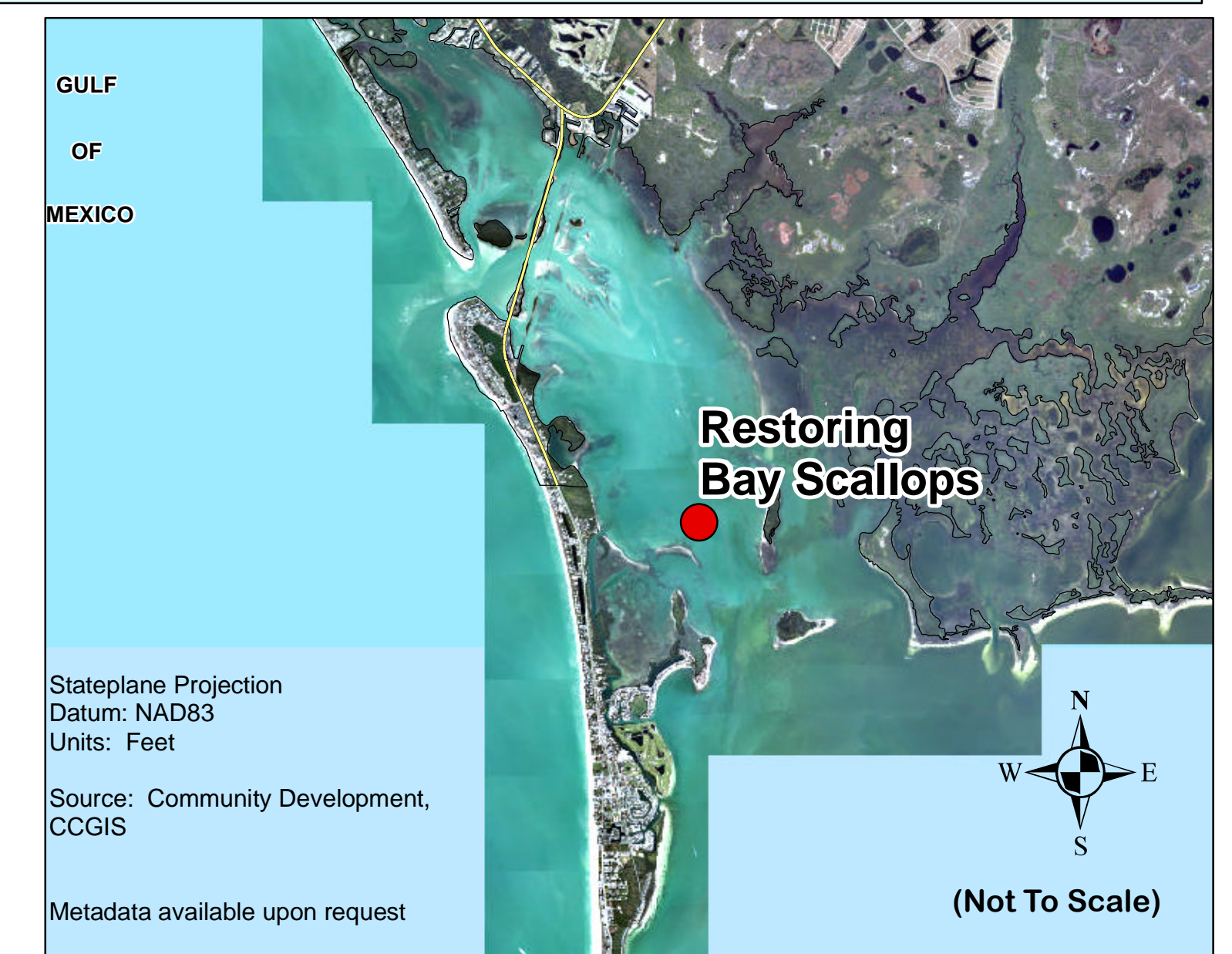
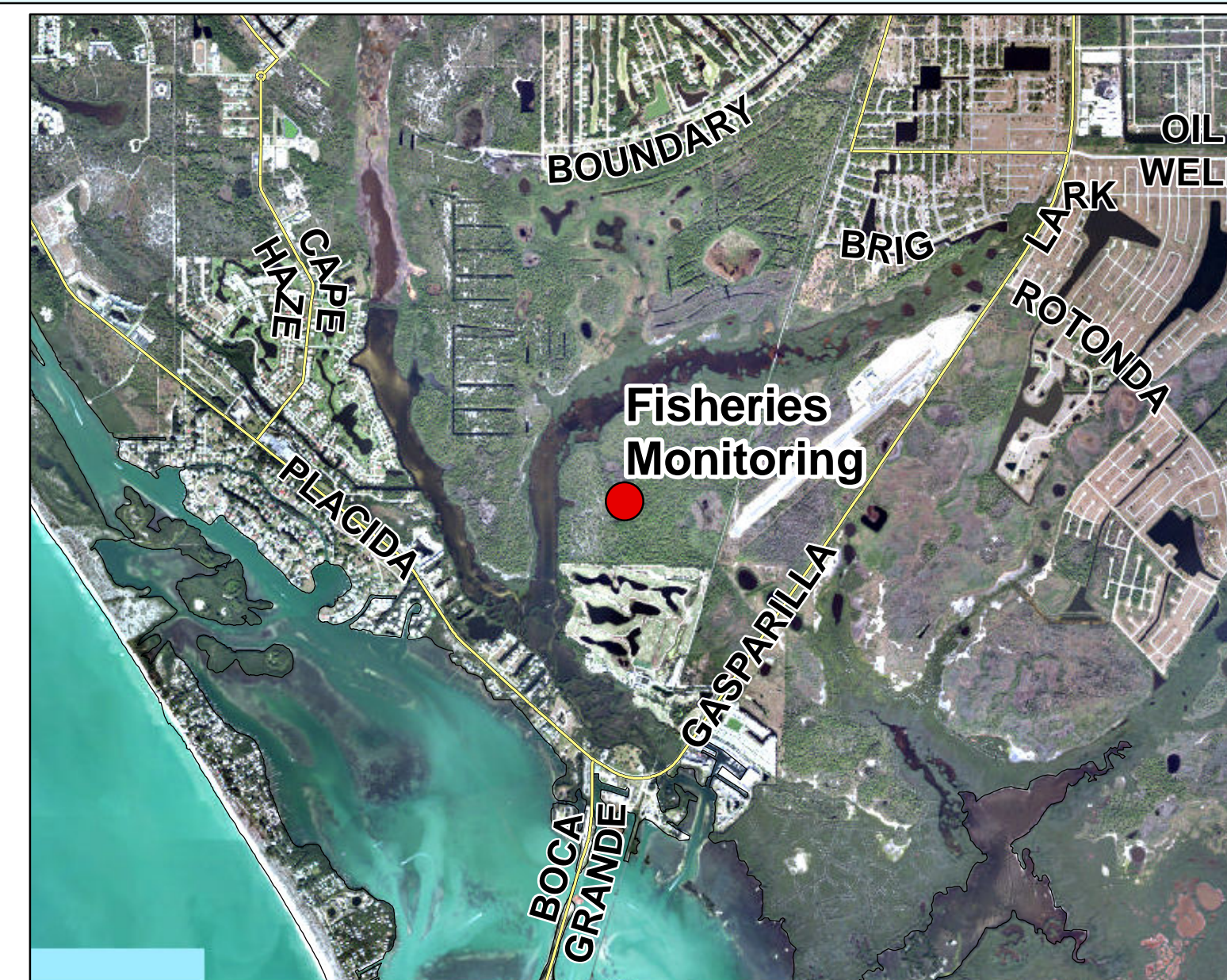
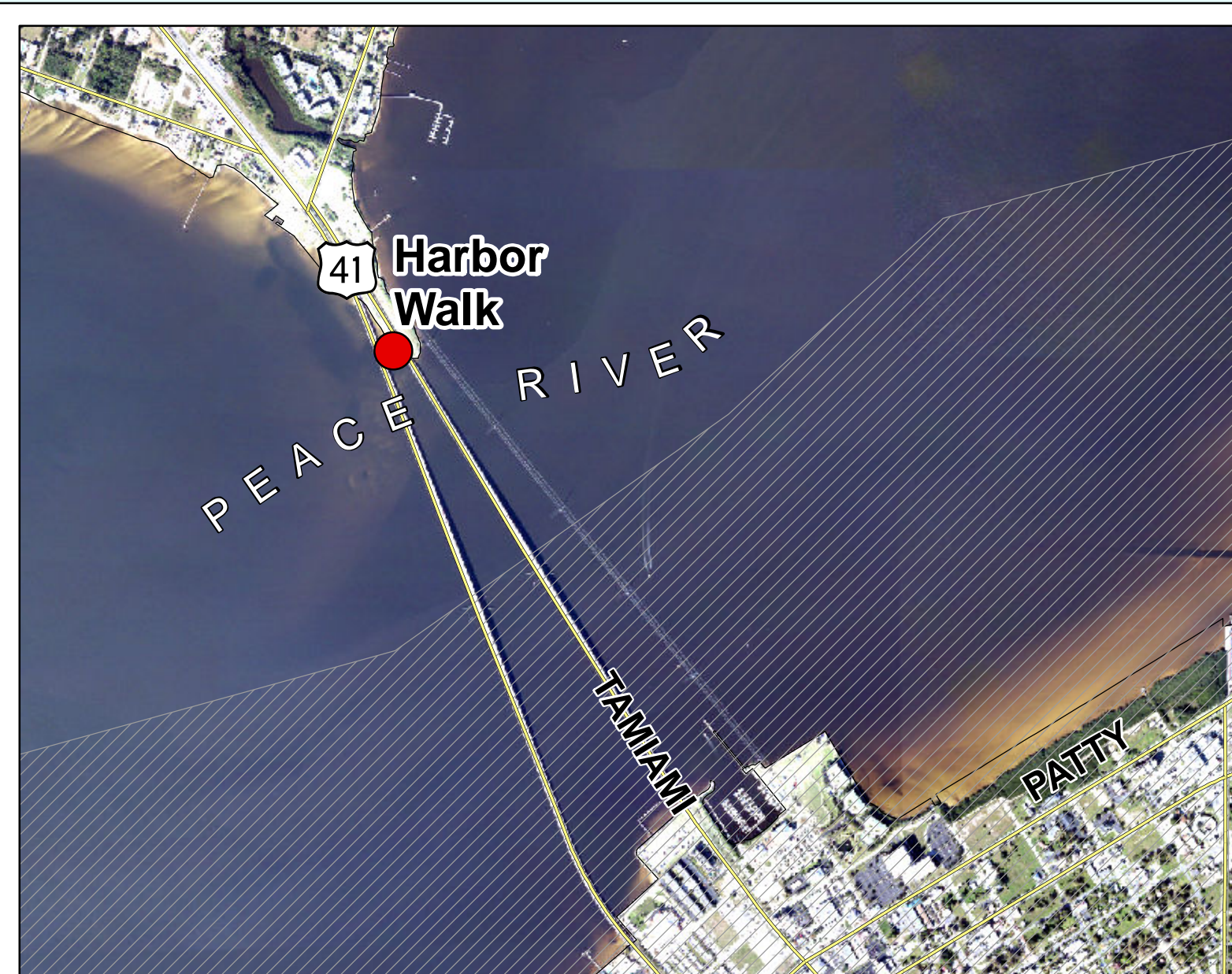
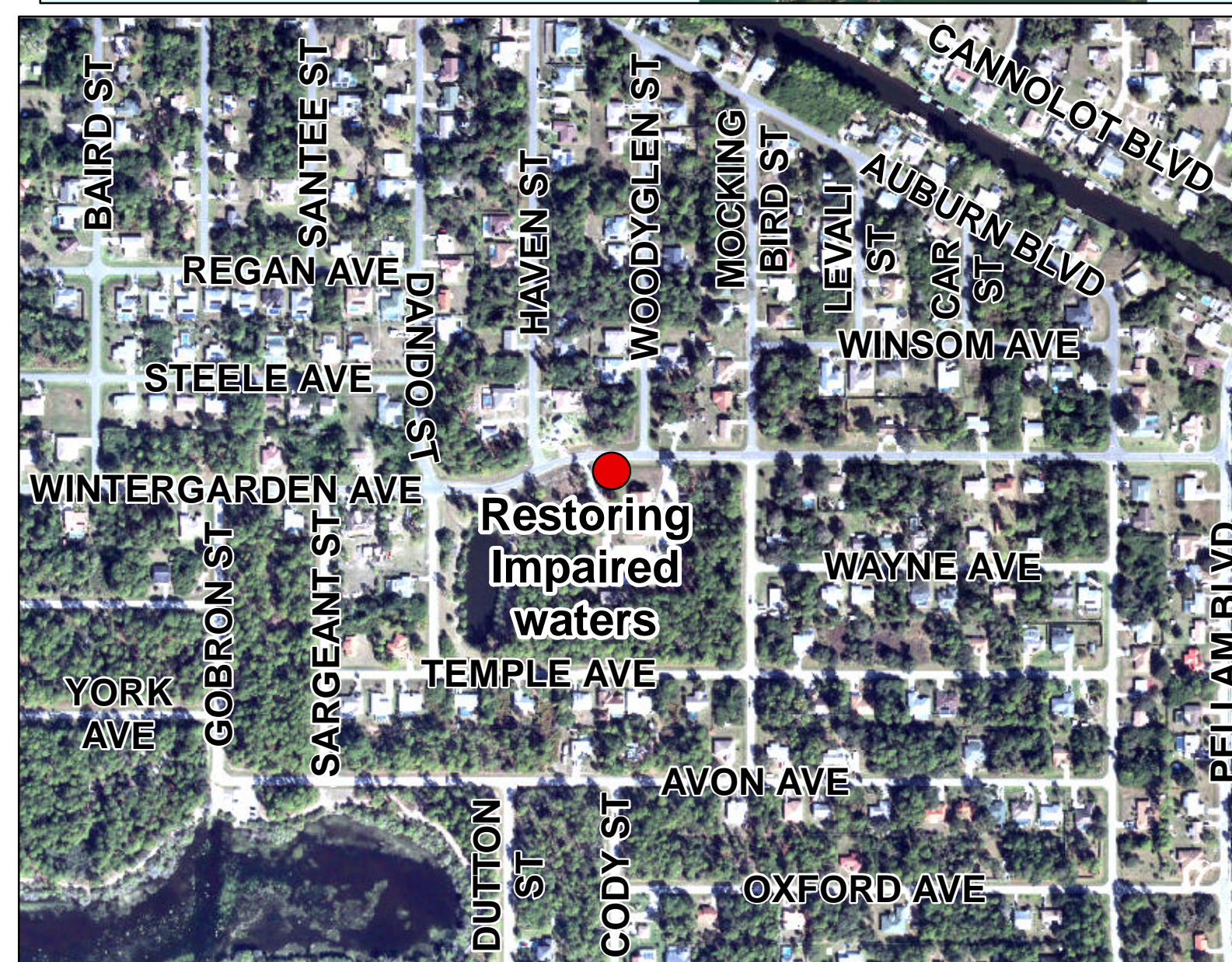
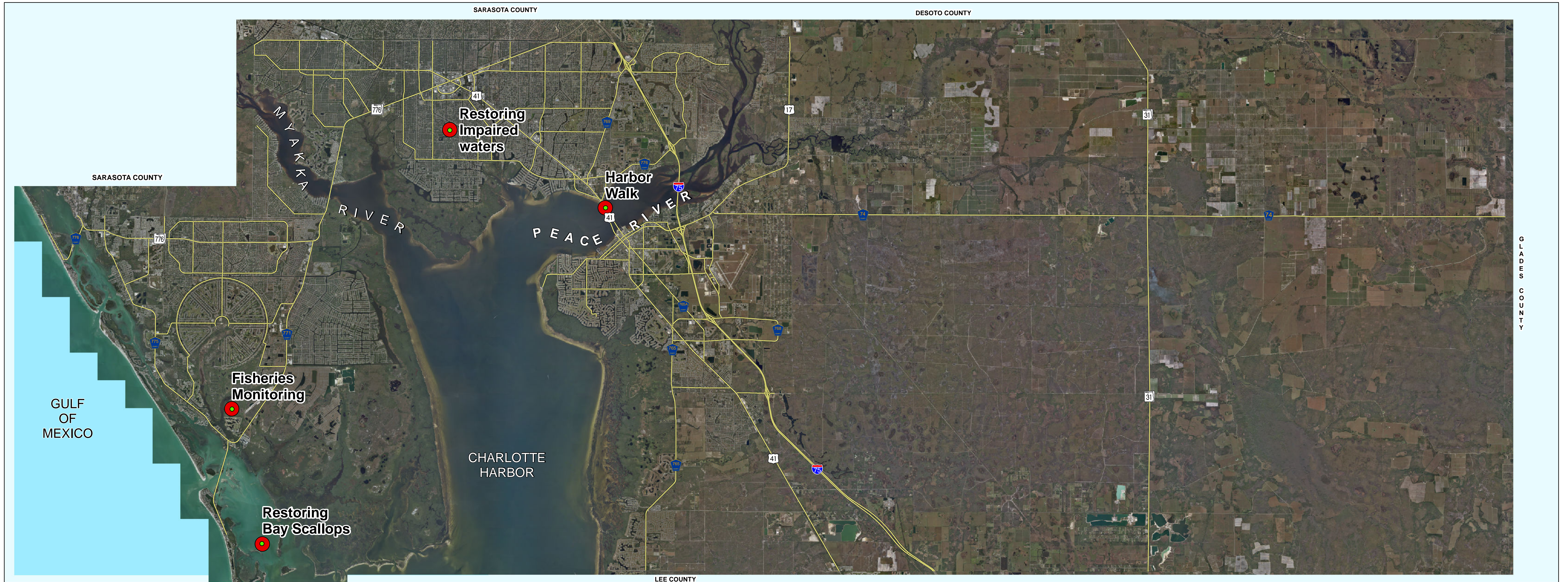
CHARLOTTE COUNTY

Multi-Year Implementation Plan for the RESTORE Act Funding

Charlotte County Government

"To exceed expectations in the delivery of public services."

www.CharlotteCountyFL.gov



This map is a representation of compiled public information. It is believed to be an accurate and true depiction for the stated purpose, but Charlotte County and its employees make no warranties, implied or otherwise, to the accuracy, or completeness. We therefore do not accept any responsibilities as to its use. This is not a survey or is it to be used for design. Reflected Dimensions are for informational purposes only and may have been rounded to the nearest tenth. For precise dimensions, please refer to recorded plats and related documents.

© Copyright 2015 Port Charlotte, FL by Charlotte County
Updated: 5/21/2015 4:07:01 PM by: SMerry-6784
M:\Departments\GIS\Projects\OutsideCustomers\Mindy Collier\Implementation Plan.mxd