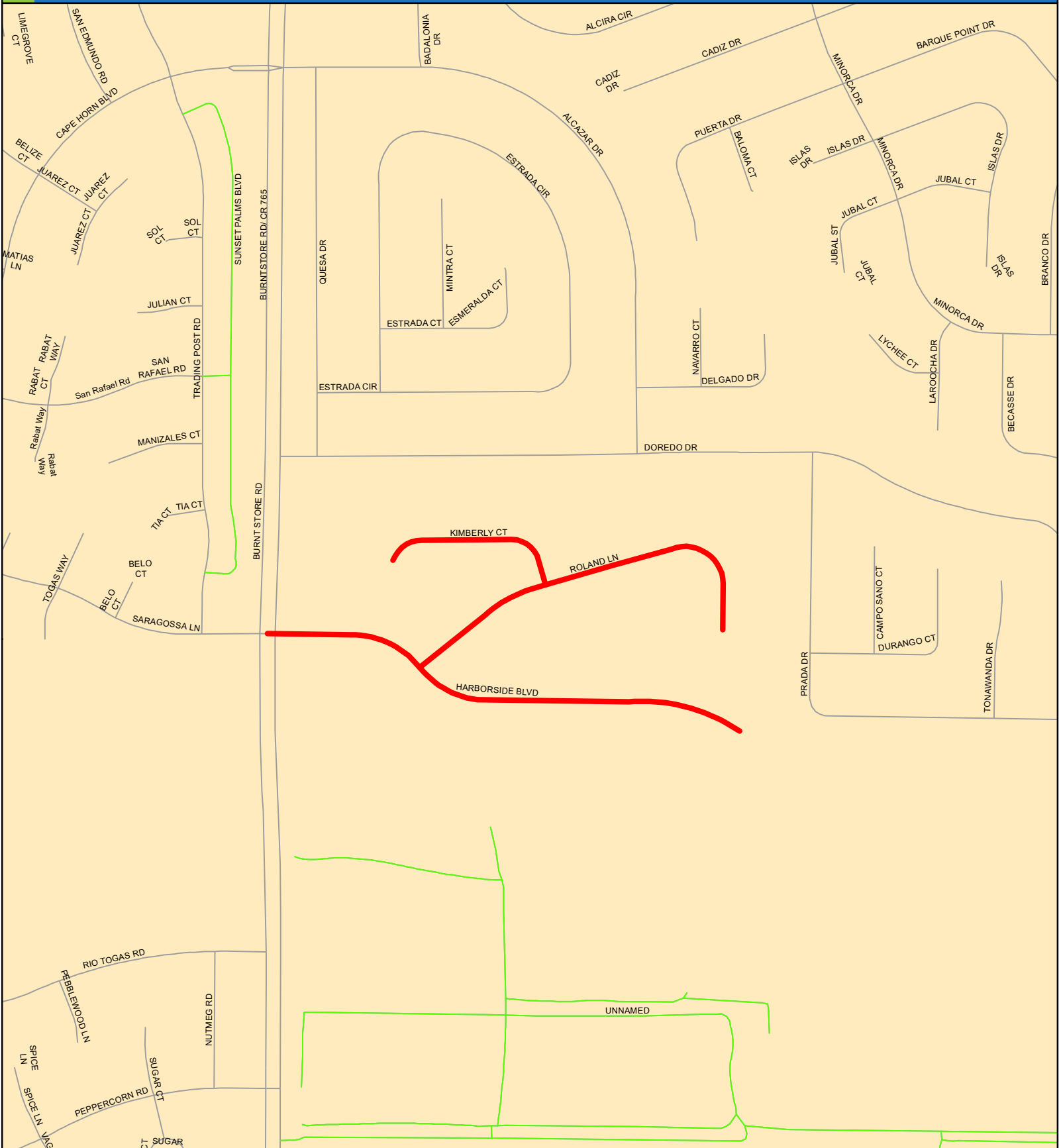


# Burnt Store Village/Woodland Estates

## Paving Program - FY 2022



**Legend:**

- FY 2022 BStorVil
- Major Roads
- Dedicated - Privately Maintained
- Private
- Other Streets
- Dedicated - Not Maintained

**MAINT BY:**

Stateplane Projection  
Datum: NAD83  
Units: Feet

Source: Public Works

Metadata available upon request

This map is a representation of compiled public information. It is believed to be an accurate and true depiction for the stated purpose, but Charlotte County and its employees make no guarantees, implied or otherwise, to the accuracy, or completeness. We therefore do not accept any responsibility as to its use. This is not a survey or is to be used for design. Reflected Dimensions are for Informational purposes only and may have been rounded to the nearest tenth. For precise dimensions, please refer to recorded plats and related documents.

© Copyright 2016 Port Charlotte, FL by Charlotte County  
Updated: 5/19/2021 9:18:53 AM by: D Jorge  
M:\publicworks\ArcProjects\10\PavMan\FY2022\_BurntStoreVillage.mxd