

Charlotte County Conservation Charlotte Nominations

Honey Acres Parcel #2 (2026-25)

ESLOC – March 16, 2026

Community Services Department
1120 Centennial Blvd, Port Charlotte FL
Phone: 941.613.3220
www.CharlotteCountyFL.gov



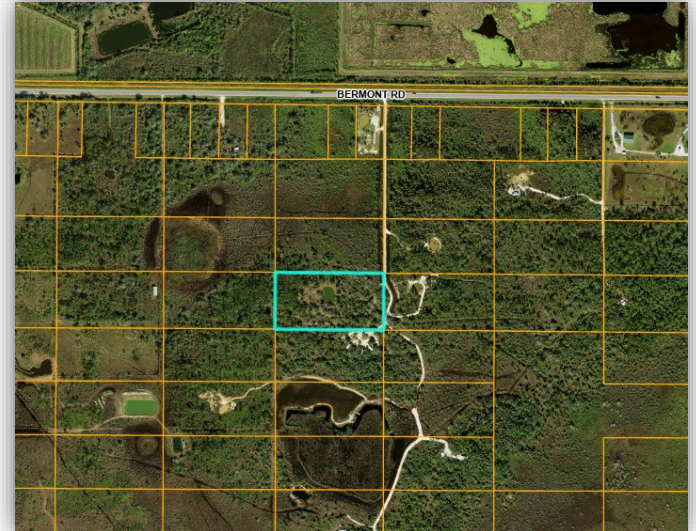
CHARLOTTE COUNTY
FLORIDA

Honey Acres Parcel #2 (2026-25)



- A site inspection was conducted by PNR staff on February 6, 2026.

- Acreage: parcel is approximately 5 acres.
- Access: parcel has no access.



Honey Acres Parcel #2 (2026-25)

DRONE VIDEO

Habitat Present - Rarity

- Mesic flatwoods – 4.25 acres

This habitat is closed canopy pine (*Pinus elliotti*) overstory with a dense understory of saw palmetto (*Serenoa repens*) and Sabal palm (*Sabal palmetto*) with various woody stem vegetation and grasses.

FNAI Global Ranking: (G3) Either very rare and local throughout its range or found locally in a restricted range or vulnerable to extinction from other factors.

Potential Listed Species: Bald eagle, Gopher tortoise, Red-cockaded woodpecker.

Observed LS: None

% Exotic Coverage: 5%



Habitat Present - Rarity

- Disturbed Habitat – 0.75 acres

The site contains a man-made pond with possible “zip lines” and some refuse. Site was impacted in late 2006 (partially cleared and pond was excavated).

FNAI Global Ranking: N/A

Potential Listed Species: N/A

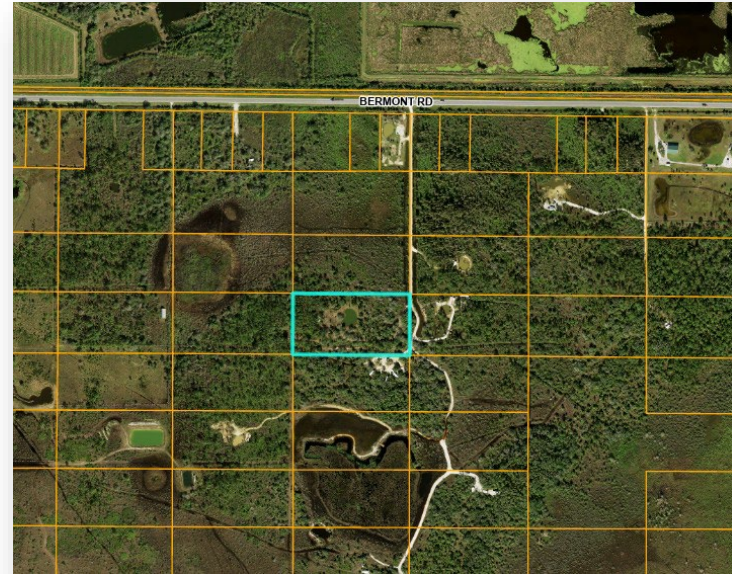
Observed LS: N/A

% Exotic Coverage: 5%



Connectedness

- Property is surrounded by privately owned rural land.
- No legal access.
- Site is not located near any existing county managed conservation lands.



Habitat Quality

- Mesic flatwoods – 4.25 acres

Overall, this site is in fair ecological condition. The site has had little ecological management and no detectable fire as of the date of the site visit. Pine density is high.

- Disturbed Habitat – 0.75 acres

The site contains a constructed pond with possible “zip lines” and some refuse.

Multiple species of exotic/invasive plant species were present but not in high densities.

Management

- This parcel has good management potential.
- Pine density is high, and the fuel load is heavy therefore some site preparation would be required prior to reintroduction of fire.
- Lack of development on the surrounding parcels means a higher potential for prescribed fire applications with significant mechanical preparation.

Water Resources

- Site was impacted in late 2006, partially cleared and pond was excavated.
- No wetlands identified on site and over 20 miles away from tidal waters.



Voting Criteria

Honey Acres, Parcel #2 (Site 2026-25) PID: 412705126008 5 Acres		
Criteria	Score	Comments
Rarity	4	Site has been impacted and is partially developed.
Connectedness	4	Site is isolated.
Quality	4	Site is mostly degraded.
Manageability	2	Good fire management potential.
Water Resources	4	No natural resources located on site.
	18	

DISCUSSION