

Charlotte County Conservation Charlotte Nominations

Honey Acres Parcel #3 (2026-27)

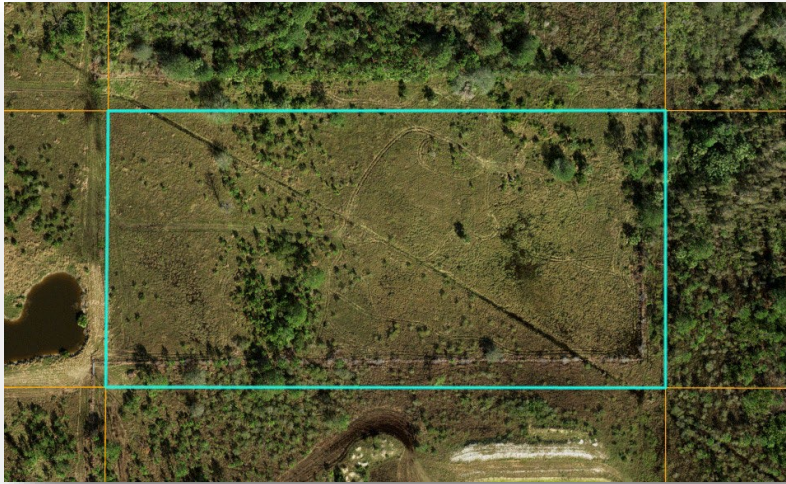
ESLOC – March 16, 2026

Community Services Department
1120 Centennial Blvd, Port Charlotte FL
Phone: 941.613.3220
www.CharlotteCountyFL.gov



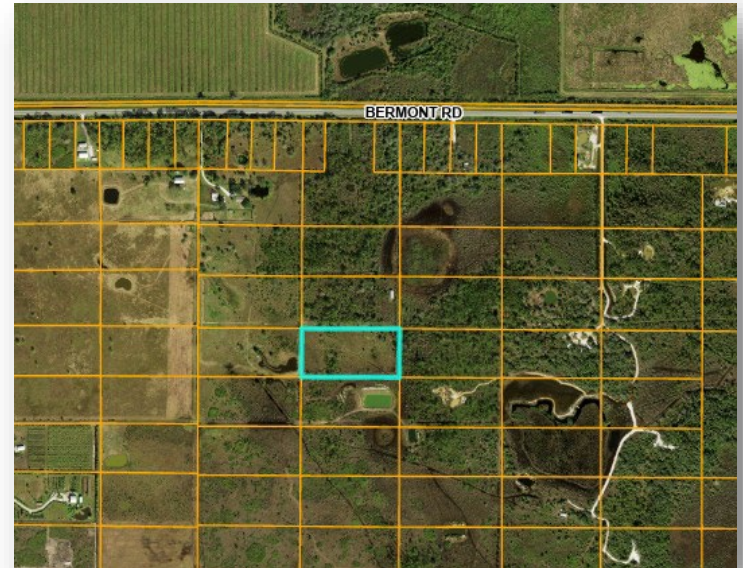
CHARLOTTE COUNTY
FLORIDA

Honey Acres Parcel #3 (2026-27)



- Acreage: parcel is approximately 5 acres.
- Access: Parcel has no access.

- A site inspection was conducted by PNR staff on February 6, 2026.



Honey Acres Parcel #3 (2026-27)

DRONE VIDEO

Habitat Present - Rarity

- Disturbed Pasture – 5 acres

The parcel is nearly 100% disturbed and functions as pasture. Some existing tree cover suggests historically it was considered mesic flatwoods.

FNAI Global Ranking: N/A

Potential Listed Species: N/A

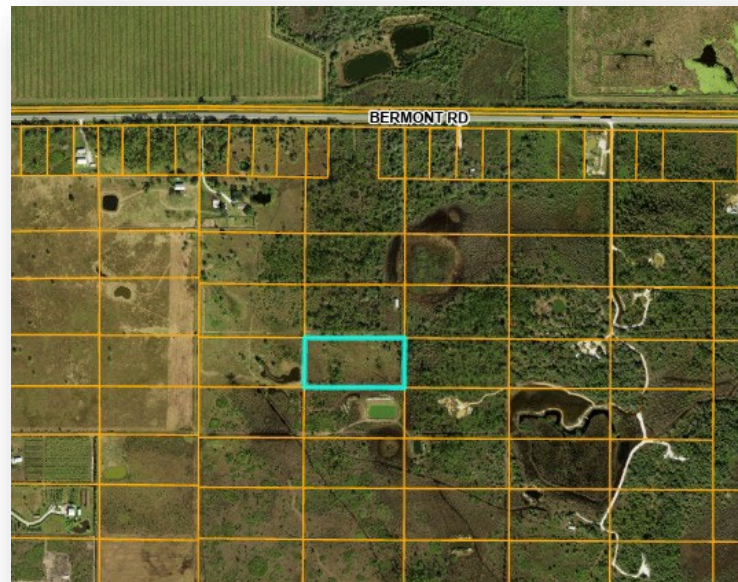
Observed LS: N/A

% Exotic Coverage: 0%



Connectedness

- Property is surrounded by privately owned rural land.
- No legal access.
- Site is not located near any existing county managed conservation lands.



Habitat Quality

- Disturbed Pasture – 5 acres

The site shows significant indicators of disturbance including ditching to facilitate drainage. Existing tree species indicate a mixture of pine and palm but all growth is less than 20yr and probably closer to 10.

Cover type consists of mixed grasses.



Management

- This parcel has low management potential. Restoration would be costly and long term.

Water Resources

- National Wetlands Inventory indicates historical Freshwater Forested Shrub wetlands may be located on site. If present, they are likely degraded due to historic ditching.
- The site is over 20 miles away from tidal waters.



Voting Criteria

Honey Acres, Parcel #3 (Site 2026-27) PID: 412705151010 5 Acres		
Criteria	Score	Comments
Rarity	4	Site is disturbed.
Connectedness	4	Site is isolated.
Quality	4	Site is disturbed.
Manageability	4	Site is isolated.
Water Resources	4	Site has no connections.
	20	

DISCUSSION



CHARLOTTE COUNTY
FLORIDA