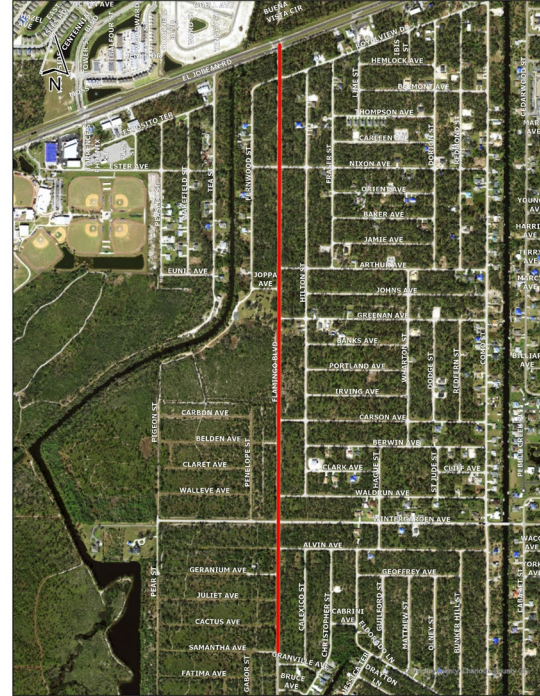


Edgewater Corridor Phase 5

Edgewater Corridor Phase 5

Phase 5

- 4 Lane divided roadway
- Between Samantha Ave and 776
- Safety Improvements
 - Add lanes to reduce congestion
 - Multiple access points
 - Add pedestrian and bicycle facilities



Edgewater Corridor Phase 5

Estimated Cost for Phase 5

- Construction - \$41,040,000
- Yearly Maintenance - \$100,580

Sales Tax Request

- Up to \$41,040,000