

Bissett Park Phase Phase 2

Bissett Park Phase 2

- Replacement of current restroom
 - 12' wide fishing pier – minimum 150' with T-dock at terminus
 - Expansion of the playground
 - 10' wide walking path – minimum 1-mile hard surface
 - Identified in BCC approved Parks & Recreation Master Plan
- Design
\$1M
 - Construction
\$3.5M
 - Projected operating costs
\$10k



Bissett Park Phase 2

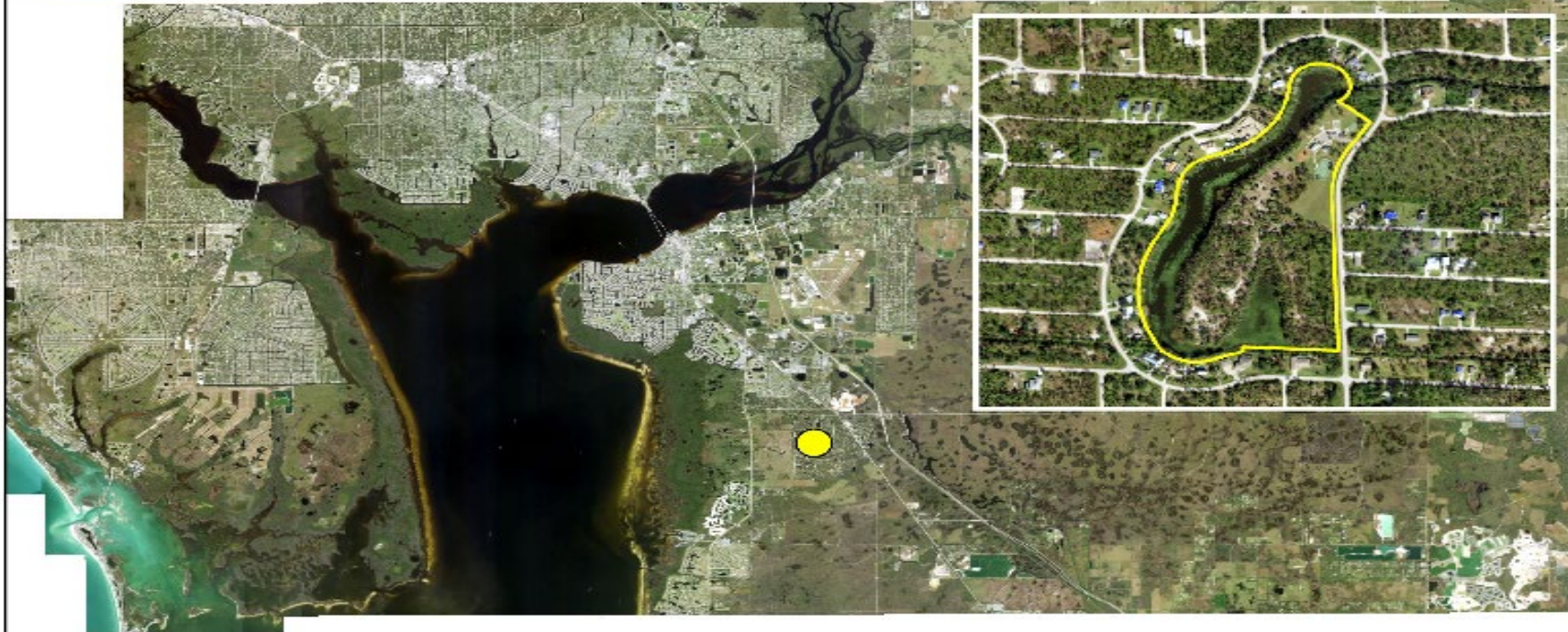


CHARLOTTE COUNTY

Bissett Community Park



CHARLOTTE COUNTY
Parks & Natural Resources



Stateplane Projection
Datum: NAD83
Units: Feet

Source: Community Development

Metadata available upon request.

 Bissett Community Park



This map is a representation of current public information. It is not intended to be an accurate and true depiction for the intended purposes, as shown, by Charlotte County and its employees. It is not intended to be used for any other purpose, including but not limited to, navigation, engineering, or other professional purposes. This is not a warranty of any kind, and it is not intended to be used for any other purpose. It is not intended to be used for any other purpose.

© Copyright 2020, Map & Data, Inc. All Rights Reserved.
Updated: 12/15/2019 12:07 PM
Map & Data, Inc. is not responsible for any errors or omissions in this map.