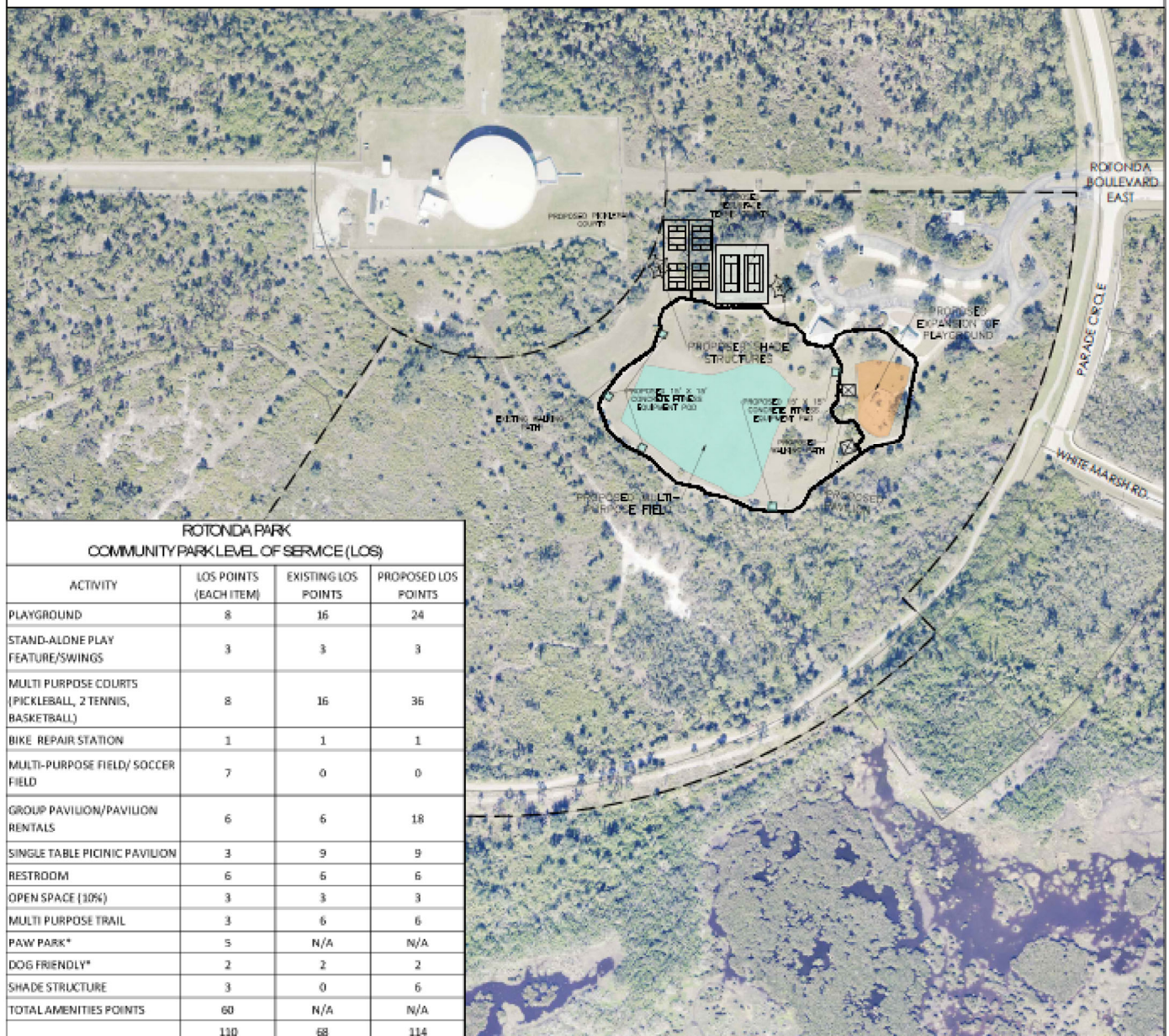


CHARLOTTE COUNTY PARKS - COMMUNITY SERVICES PARK RE-MASTER PLAN

LEGEND:

- PROPOSED MULTI-PURPOSE FIELD
- PROPOSED GREEN SPACE
- PROPOSED PLAYGROUND AREA
- PROPOSED FITNESS STATION
- PROPOSED SIDEWALK, NATURE TRAIL
- PROPOSED 0.25 MILES WALKING TRACK
- PROPOSED PAVILION
- PROPOSED SHADE STRUCTURE
- PROPOSED FISHING PIER, AND BOARDWALK



ROTONDA PARK
COMMUNITY PARK LEVEL OF SERVICE (LOS)

ACTIVITY	LOS POINTS (EACH ITEM)	EXISTING LOS POINTS	PROPOSED LOS POINTS
PLAYGROUND	8	16	24
STAND-ALONE PLAY FEATURE/SWINGS	3	3	3
MULTI PURPOSE COURTS (PICKLEBALL, 2 TENNIS, BASKETBALL)	8	16	36
BIKE REPAIR STATION	1	1	1
MULTI-PURPOSE FIELD/ SOCCER FIELD	7	0	0
GROUP PAVILION/PAVILION RENTALS	6	6	18
SINGLE TABLE PICNIC PAVILION	3	9	9
RESTROOM	6	6	6
OPEN SPACE (30%)	3	3	3
MULTI PURPOSE TRAIL	3	6	6
PAW PARK*	5	N/A	N/A
DOG FRIENDLY*	2	2	2
SHADE STRUCTURE	3	0	6
TOTAL AMENITIES POINTS	60	N/A	N/A
	110	68	114

Drawn by: E:\Projects\2024\2024-0305 Community Services Park Re-master Plan\2024-0305\0305-0001.dwg

Design By: ABW

Drawn By: RMS

Checked By: KEV

Date: 6-05-2025

Proj. No.: 24-0305

SCALE: NOTE



DMK ASSOCIATES
ENGINEERING, PLANNING & DESIGN
405 Commercial Court, Suite E Venice, Florida 34292
Phone: (941) 412-1293, email: info@dmkassoc.com
Certificate of Authorization No. 3943

EXHIBIT - 26
ROTONDA COMMUNITY
PARK