

## EMERGENCY CONTACTS Charlotte County



Charlotte County Animal Control  
941-833-5690  
Animal.Control@CharlotteCountyFL.gov  
www.CharlotteCountyFL.gov/animal

Charlotte County Emergency Management  
941-833-4000  
Emergency.Management@CharlotteCountyFL.gov  
www.CharlotteCountyFL.gov/emergency

American Red Cross  
941-629-4345  
www.redcross-charlotte.org

For Lost Pets:  
Animal Welfare League - 941-625-6720  
www.awlshelter.org

Suncoast Humane Society - 941-474-7884  
www.humane.org

IN THE EVENT OF AN EMERGENCY, LISTEN TO LOCAL RADIO AND TELEVISION FOR CURRENT INFORMATION ABOUT EVACUATION AND SHELTERING

PREPARE EARLY BECAUSE CHANGES CAN HAPPEN RAPIDLY

MAKE SURE YOU ARE AWARE OF YOUR EVACUATION ZONE PRIOR TO AN EMERGENCY



PREPARE A FAMILY AND FRIEND "PHONE TREE" SO YOUR LOCATION CAN ALWAYS BE DETERMINED

LEAVING YOUR PET BEHIND IN A DISASTER DECREASES ITS CHANCE OF SURVIVAL DRAMATICALLY

## PET SHELTER RULES

- Report to your designated shelter as soon as the shelter has been opened.
- Owner must sign a release upon arrival at the shelter. Failure to sign or follow the above rules will result in removal of the animals.
- Be sure you have identification for yourself, pets and family members, all current medical records, food, water, and supplies needed for 7 days.
- Provide a crate large enough to house your pet and to include water/food/litter (if feline). Cage doors must be latched and secured.
- Pets are to be leashed at any time they are out of their carriers.
- Owners are responsible for all daily care of their pet(s); pets are to be fed/exercised twice daily.
- Owners must dispose of any waste immediately.
- Cage doors must be latched and secured.
- Animals that are diseased, have parasites or are unruly will not be allowed in public sheltering.
- Any animal abandoned in the shelter will be relocated to Charlotte County Animal Control. Disposition is at the discretion of CCAC.
- Owner is liable for damages or in the event of any injury caused to any person or other animal.
- Pets are not permitted in "resident" areas. There are separate "living areas" for pets and for people.

### Animals Allowed

- Dogs & Cats (domestic breeds only in cages)
- Birds (domestic in cages only)
- Rabbits • Ferrets • Hamsters • Gerbils (domestic in cages only)

### Animals NOT Allowed

- Exotics (birds, primates, snakes, etc.)
- Spiders • Insects • Farm/Agricultural animals

## DISASTER PLANNING FOR PETS

# ARE YOU READY?



## Pet Friendly Shelter Information

### PROPER PLANNING CAN AVOID THE NEED FOR PUBLIC SHELTERING

- Have a disaster plan that includes leaving the area
- Contact motels/hotels that are pet-friendly
- Ask your veterinarian about boarding facilities
- Have an "emergency kit" ready BEFORE the event
- Check various pet publications and websites for alternative housing other than public sheltering
- Have current photos of your pets AND you with your pets

THE BEST PLAN IN THE EVENT OF AN EMERGENCY IS TO LEAVE THE AREA

## PLAN AHEAD

An emergency can happen at ANYTIME!

Crate your pets prior to travel. Stress is reduced, and your pet will feel safer.

Make sure your pets are properly vaccinated and have a current rabies tag. **PET-FRIENDLY SHELTERS DO NOT ACCEPT PETS WITHOUT CURRENT MEDICAL RECORDS.**

When told to evacuate, do so immediately. **DO NOT WAIT UNTIL THE LAST MINUTE.**

Be prepared to care for yourself and animals for at least 7 days. Power is often interrupted and supplies are scarce.

Make sure your animals are micro-chipped and have current identification tags.

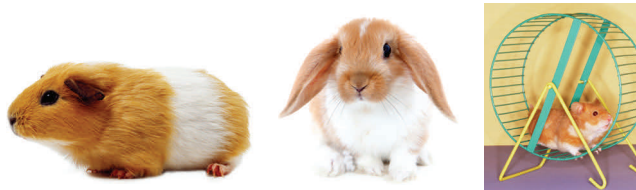
**HAVE A FAMILY EMERGENCY EVACUATION PLAN!**

**Stay informed through local radio, television, Charlotte Alert, Social Media, and the County Website**  
**[www.CharlotteCountyFL.Gov](http://www.CharlotteCountyFL.Gov)**



## WHAT YOU MUST BRING TO THE SHELTER

- ⇒ Proof of ownership
- ⇒ Copy of current vaccination & medical records
- ⇒ Crate or cage w/bedding large enough for the animal to stand, lie down, turnaround in with room for litter/food/water/blanket
- ⇒ Current photo of pet
- ⇒ Collar, leash, muzzle
- ⇒ ID & rabies tag
- ⇒ Pet "comfort" items (toys, blankets, treats)
- ⇒ Food, bowls, water, medications, litter & pans, first aid, cleaning aid and disposal supplies for 7 days.
- ⇒ Out of area contact name and phone number



Be advised that Charlotte County reserves the right to refuse admittance to any animal that poses a risk to other animals or people.

Distributed by Charlotte County Government

## WHAT A PET-FRIENDLY SHELTER CAN DO:

- ◆ Provide you and your pet(s) a safer refuge than your home in the event of an emergency (LAST RESORT).
- ◆ Keep you updated as to the state of the emergency.
- ◆ Shelter your pet in a clean, supervised area away from the general human population.

## WHAT A PET-FRIENDLY SHELTER CANNOT DO:

- ◆ Allow you to remain with your animal continuously.
- ◆ Board or kennel an animal without an owner or representative present at the shelter.
- ◆ Provide daily care or veterinary services to your pet(s).
- ◆ Once admitted, allow you to leave the shelter without your animal or during sustained winds of 45 mph or higher.
- ◆ Transport you or your animals to or from the shelter.
- ◆ Give prescribed medication to your pet(s).
- ◆ Provide basic care to your animal. You are responsible for the care of your pet(s).

**PUBLIC SHELTERING SHOULD BE YOUR LAST RESORT!** PLEASE PREPARE A FAMILY DISASTER PLAN TO PREVENT YOUR NEED TO SHELTER YOUR FAMILY AND PETS!